



WOODWORKING MACHINERY



EVERYWHERE WITH YOU

WRAVOR

WRAVOR d.o.o.
production, trade, transport, import - export

Stranice 27/a, 3206 Stranice, Slovenia

Tel: +386-3-757-19-10

Fax: +386-3-757-19-20

E-mail: wravor@wravor.si

GPS: 46°21' S, 15°21' V

 : <https://www.facebook.com/wravor.doo?fref=ts>

 : <https://twitter.com/WravorDoo>



www.wravor.com



CE EAC





**HORIZONTAL
BANDSAWS**

3



**CIRCULAR
SAWS**

16



**SAWING
LINES**

20



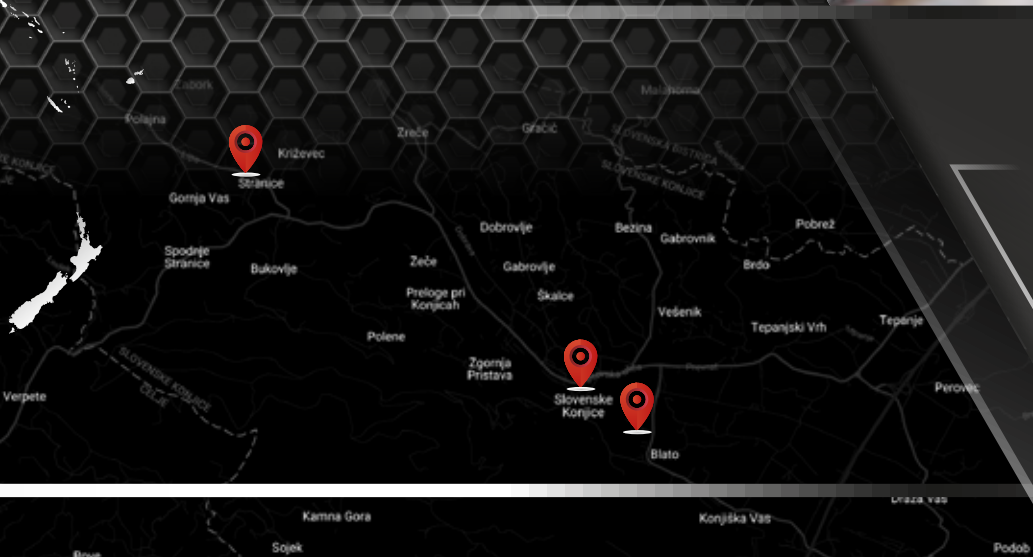
**DEBARKING AND
SORTING LINES**

22



**MACHINES FOR
CIRCULAR AND
BANDSAW BLADES
MAINTENANCE**

24



This company has its roots in experienced sawmilling family.

After years of producing bandsaws in the garage at his house, his desire to display innovative technologies led Vladimir Wrvor to the establishment of the WRAVOR company.

1934

1985

TRADITION

WRAVOR was born and grew in the heart of the Pohorje forests where dealing with timber is in people's blood. Having started as a small company, with its roots in the love for wood and its processing, grew a successful company with a tradition and experience, known world-wide and with solid foundation for the future.

Company's main activity is to design and build machines for sawmills.

Principally horizontal logbandsaws which can be installed either independently or in connection with conveyors and multirips in sawing line, and resulting as a combination of high technology with a minimal cost of labour and premium cutting capacity.

We are proud to see our machines provide work and income to small and middle sized sawmills or they are integrated in big sawmills all around the world. WRAVOR machines are cutting huge amounts of diverse wood pending from domestic to exotic hardwood. What truly fills us with pride is that customers who run our machines, always come back to us for a next need.

Once Wrvor, always Wrvor.

Why choose Wrvor?

One family ...



QUALITY

High – tech level of production and mounting high quality components from recognized suppliers.



FLEXIBILITY

We do not offer standard machines, but all custom made according to requirements of the customer.



CUSTOMER SERVICE

We are open for any questions and help also after the warranty period has expired, with our service team all over the world we enable that our machinery never stop.



RESPONSIVENESS & SERVICE

Quickly respond to all customer queries and in case of problems we solve them as soon as possible.



... many innovations.



CERTIFICATES & ACHIEVEMENTS

Founder and general manager of the company Vladimir Wra-
vor received the award for outstanding business achieve-
ments from Chamber of commerce and industry Slovenia.
WRAVOR became a famous and wellknown brand and
standard of quality in its branch. it received awards as exhib-
itors for best technical achievements in the field of wood-
working technology.
All products are certified according to CE quality norms and
Russian GOST standard of quality.



INNOVATION AND OWN DEVELOPMENT

We are always looking for new
solutions how to improve ma-
chines and we constantly intro-
duce new technologies which are
followed by competing companies.

VISION

**HQ, INDUSTRIAL PRODUCTION
& warehouse in more than
10000m² in three locations**

With all qualities that we can offer to customers is our
vision clear. »**BE THE BEST**« !

WRC 2000 AC

Horizontal bandsaws for large sawmills

**THE WORLD BIGGEST
HORIZONTAL BAND SAW**



Scissor lift for heavy boards

WRC 2000 AC

TECHNICAL DATA

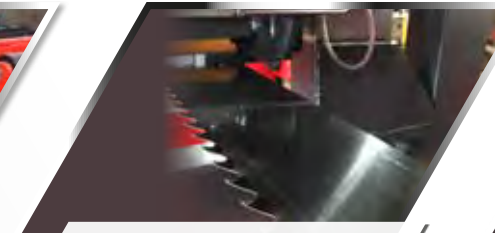
Diameter of main wheels: 1350 mm
Width of main wheels: 160 mm
Max. log diameter: \varnothing 2000 mm
Cutting length: ON DEMAND
Bandsaw blade length/width: 10215 / 180 mm*
Main motor power [kW]: 75 Kw / 110 Kw
Cutting capacity: up to 100 m³ / 8h *

*doublesided blade is +20mm wider

* Option / additional equipment (page 14)



Heavy duty construction



Wide bandsaw blade with cooling



Massive movable 2 step grippers and log support

Horizontal bandsaws for cutting hard exotic wood with big diameter

Specialty of these bandsaws is a robust and wide construction with additional reinforcements. All manipulation and control components including electronics are adapted to harsh weather conditions. We have also perfected form for easy transportation and installation.



WRC 1550 AC

TECHNICAL DATA

Diameter of main wheels:	1350 mm
Width of main wheels:	160 mm
Max. log diameter:	∅ 1550 mm
Cutting length:	ON DEMAND
Bandsaw blade length/width:	9800 / 180 mm*
Main motor power [kW]:	55 Kw/75 Kw
Cutting capacity:	up to 80 m ³ / 8h *

*doublesided blade is +20mm wider

* Option / additional equipment (page 14)



Twin log turners –
movable for big logs



Controlled in a separate
operator cabin.

WRC 1250 AC

Horizontal bandsaws for high productivity sawmills



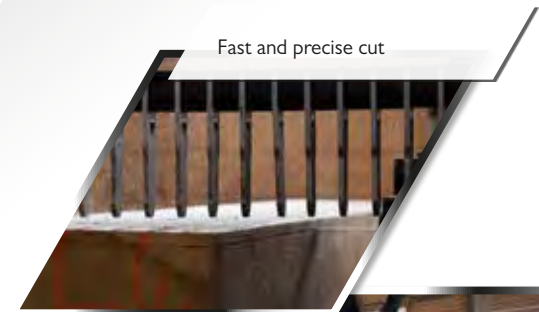
WRC 1250 AC

TECHNICAL DATA

Diameter of main wheels: 1250 mm
Width of main wheels: 135 mm
Max. log diameter: \varnothing 1250 mm
Cutting length: ON DEMAND
Bandsaw blade length/width: 9045 / 160 mm*
Main motor power [kW]: 45/55 Kw
Cutting capacity: up to 55 m³ / 8h*
*doublesided blade is +20mm wider

* Option / additional equipment (page 14)

Fast and precise cut



Continuously controlled cutting process with video & eye visualization



Precutter follows log shape



Pushing boards with guiding hand



Fast manipulating with log



Strong rails with extra weld hardened material, movable log turners, reinforced support, each roller movable (high) + driven



Horizontal bandsaws for sawmills with high cutting capacity

These saws in addition to its strong construction are distinguished by a high degree of automation, which contributes to high cutting capacity with minimum labour. They are upgraded with fully automated system with automatic setting of cut thickness and movements. In most cases are connected in production line with logdeck, outfeed conveyors and multirips.



WRC 1225 AC

TECHNICAL DATA

Diameter of main wheels:	1200 mm
Width of main wheels:	125 mm
Max. log diameter:	∅ 1250 mm
Cutting length:	ON DEMAND
Bandsaw blade length/width:	8685 / 150 mm*
Main motor power [kW]:	30-45 Kw
Cutting capacity:	up to 43 m ³ / 8h *

*doublesided blade is +20mm wider

* Option / additional equipment (page 14)



Side holders on rails

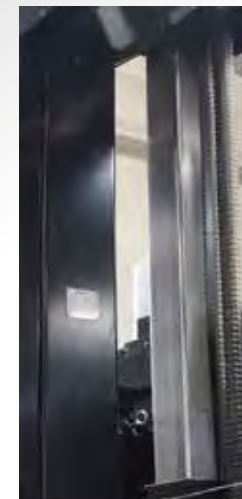


WRC 1150 AC

TECHNICAL DATA

Diameter of main wheels: 1150 mm
 Width of main wheels: 115 mm
 Max. log diameter: \varnothing 1150 mm
 Cutting length: ON DEMAND
 Bandsaw blade length/width: 8190 / 140 mm*
 Main motor power [kW]: 22-45 Kw
 Cutting capacity: up to 20-40 m³ / 8h *
 *doublesided blade is +20mm wider

* Option / additional equipment (page 14)



Double threaded spindle



Automatic lubrication and cleaning



Guiding hand



Double pre-cutter



Hydraulics covered under the deck in the rails with galvanized hydraulic pipes

Horizontal bandsaws for sawmills with smaller cutting capacity

Horizontal bandsaws are designed for individuals for which sawmilling is not main activity but only supplementary. This bandsaws are simple, but still sufficiently equipped with hydraulic components for simple and easy work. Saws are customized for easy installation and minimal use of labour.



WRC 1050 AC



Wide range of log manipulating equipment



Air-conditioned cabin on the sawmill.

TECHNICAL DATA

Diameter of main wheels:	1050 mm
Width of main wheels:	100 mm
Max. log diameter:	∅ 1050 mm
Cutting length:	ON DEMAND
Bandsaw blade length/width:	7470 / 120 mm*
Main motor power [kW]:	18.5-45 Kw
Cutting capacity:	up to 30 m ³ / 8h *

*doublesided blade is +20mm wider

* Option / additional equipment (page 14)



**WRC 1050
VENEER**

TECHNICAL DATA

Diameter of main wheels: 1050 mm
Width of main wheels: 115 mm
Dimension of prisms: 850/750 mm
Cutting length: ON DEMAND
Bandsaw blade length/width: 7470 / 140 mm*
Main motor power [kW]: 30-55 Kw
Cutting capacity: up to 850 lamels/8h *

* Option / additional equipment (page 14)

**Automatic bandsaws for
cutting veneer**

This type of bandsaws are designed and manufactured with years of engineering and testing on field directly with customers. A lot of patents distinguishes a fully automatic bandsaw, 2 side cutting veneer with accuracy of 0.01mm!, automatic setting of thickness, movement and removal of lamellas.



It can be equipped with prism loading ramp ...



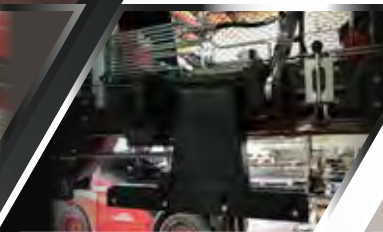
... or automatic logdeck ...



... and outfeed conveyor with robot manipulator.



Machine has special prism turners.



Adjustable hand for boards



Additional sawdust exhauster system with ventilator on machine.



Machine can operate independently or connected in multi-line with several veneer bandsaws

Cutting glass wool and glulam

This machine has special holders that can be set with pressure and high level of automation and manipulation of cut material.



Cutting plastics

This machine is equipped with vacuum holders or with robotic arm for handling workpieces.



Bandsaw with edgers

We can add circular saws on every machine for edging boards at the same time.



Options/additional equipment

Options / equipment on the rails

RAILS



mounted in concrete



bandsaw for big logs



Elevated rails with automatic system for waste cleaning.

GRIP



grip with one cylinder



grip with two cylinders + mechanical grip lift



grip with two cylinders + hydraulic lifting of grip pins

LOG TURNER



standard

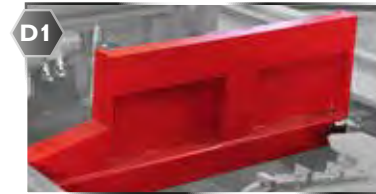


movable logturner



double logturner

LIFTING + MOVEMENT



mechanical holder



lifting



lifting + movement of roller

ANGLE



angle



double movable logturner

Additional



multifunctional joystick



laser



display



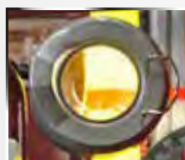
camera



central greasing



rearview mirror



magnifying glass



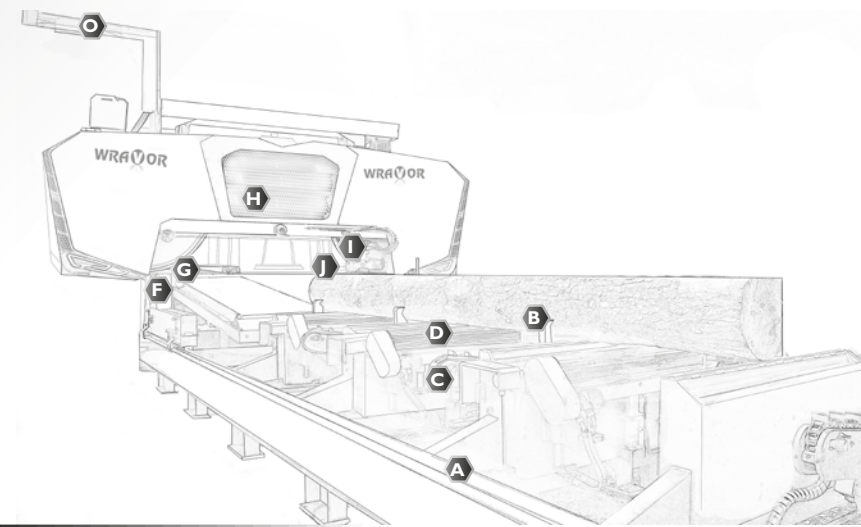
light



automatical blade cooling and greasing



central greasing



**Options /
equipment
on the
headrig**

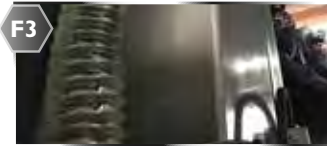
MOVEMENT UP/DOWN



with spindles



with chains



fast spindles - servo controlled

**BANDSAW BLADE
GUIDANCE**



manual



hydraulic



pressure with oil mist

**BANDSAW BLADE
TENSION**



manual - hydraulic



automatic-hydraulic tensioning
+ accumulator

WHEELS



welded



cast steel

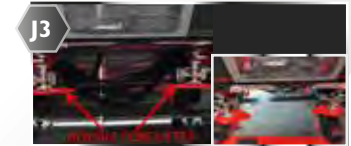
PRECUTTER



electrical



hydraulic



double hydraulic or electrical

**SETTING OF
CUT THICKNESS**



manual on
the scale



with computer



with computer,
automatic setting

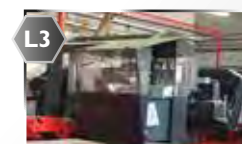
COMMAND PANEL



on the machine



command panel - self standing



air-conditioned command panel
separate or on machine

**HAND FOR
PUSHING BOARDS**



mechanical



hydraulic

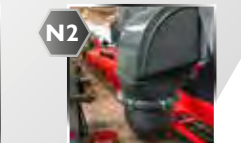


additional
guiding hand

EXHAUSTER



mechanical opening



preparation for
ventilation with hose



ventilator

CABLE CARRIER



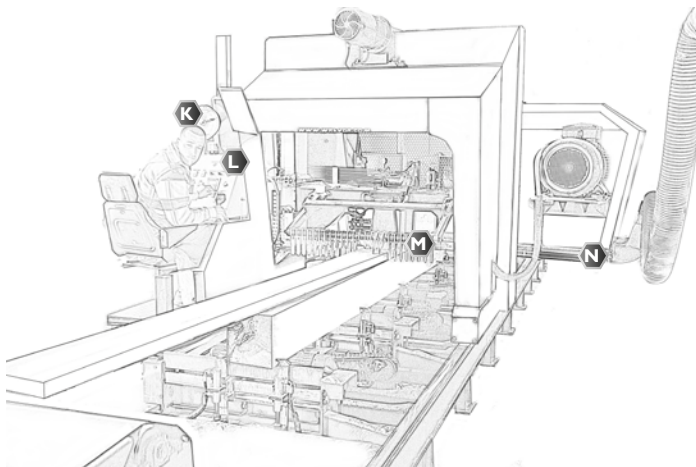
steel rope



C profile + cable wheels



plastic cable
carrier - chain



Circular saws for cutting boards by width

Circular sidesaw type 500/ 500S



TECHNICAL DATA

	500	500 S
	manual setting of cutwidth	digital setting of cutwidth
Main motor	7,5 kW / 9,5 kW	7,5 kW / 9,5 kW
max. cutting height circular saw	100 mm	100 mm
max cutting length	Ø 350 / 30	Ø 350 / 30
	6,2 m	6,2 m

Circular crossaw typ 700A



TECHNICAL DATA

Main motor	3/5,5 kW
max. cutting height circular saw	100 mm
max. cutting width (it depends from height)	Ø 400 / 40 mm 900 mm

INCLUDED IN THE LINE

MACHINES CAN BE INDEPENDENT OR INCLUDED IN LINE WITH MEH/AUTO. TRANSPORTERS



**Circular crossaw typ
700B - pneumatical**



TECHNICAL DATA

Main motor	6kW
Cutting thickness	150 mm
Cutting width	1000 mm
Circular blade- diameter	500 mm

**Circular crossaw typ
800A -pneumatical**



TECHNICAL DATA

Main motor	6kW
Cutting thickness	100 mm
Cutting width	700 mm
Circular blade- diameter	400 mm
Automatical movement of crossaw cut	

**Circular crossaw typ
800B -pneumatical**



TECHNICAL DATA

Main motor	9,2kW / 11 kW
max. cutting height	800/50 mm
circular saw	Ø 550 / 40mm



Crosssaws for cutting boards by length – circular saws

750 20-100 (single axis - edger)



TECHNICAL DATA

Main motor:	22kW
Min/max cutthickness	20/100mm
Max cutting width :	600mm
Diameter of circular blade :	350/80mm
Max number of circular blades:	4 pieces
Number of movable blades:	1 piece

Option: computer setting of cutwidth / brushes / additional laser / sawdust collector with automatical belt

750 20-120 (single axis) / (2 x) / (3 x) / (4 x) / B – brushes



TECHNICAL DATA

main motor:	22/30/37 kW
min/max cutthickness	20/120mm
max cutting width :	900-1000 mm
diameter of circular blade :	400/90mm
max number of circular blades:	8 pieces
number of movable blades:	1 piece / 2 x – 2 pieces / 3 x – 3 pieces/ 4 x -4 pieces
computer setting of cutwidth	

Option: brushes / additional laser / sawdust collector with automatical belt

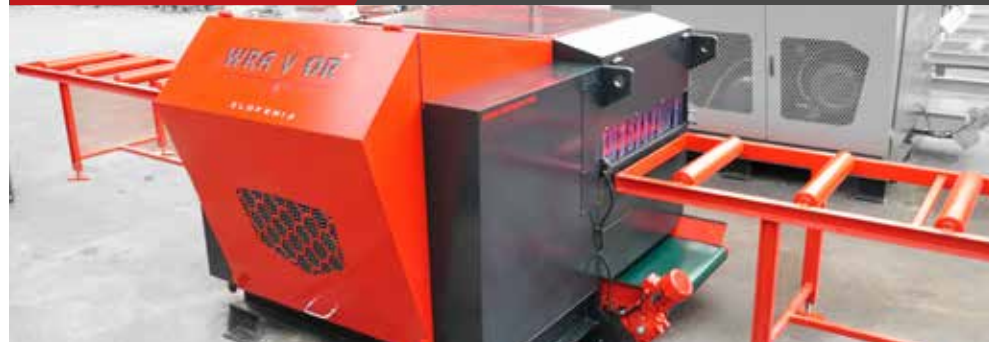
750 20-160 (single axis) / (2 x) / (3 x) / (4 x) / b – brushes



TECHNICAL DATA

Main motor	30 / 37 / 45 / 55 kW	opening for exhauster	Ø 200
Min/max. Cutthickness	20 mm / 160 mm	automatical conveyor for s awdust length	1600 mm
Max cutting width	900 - 1000 - 1250 mm	laser (number depends from movable blades)	15 mW
Max. diameter of circular blade	Ø 500 / 90 mm		
Max. number of circular blades	10 pieces		
Number of movable blades	1 piece / 2 x – 2 pieces / 3 x – 3 pieces/ 4 x -4 pieces	Option: computer setting of cutthickness V 130 / V280, automatical infeed conveyor with centrator, automatical outfeed conveyor with sorting	

750 40-200



TECHNICAL DATA

Main motor	37 / 45 / 55 kW	automatical conveyor for sawdust length	2200 mm
Min/max. Cutthickness	40mm / 200 mm	laser	15 mW
Max cutting width	800 - 900		
Max. diameter of circular blade	Ø 400 mm / 90 mm	Option: automatical outfeed conveyor with sorting	
Max. number of circular blades	10 + 10 pieces		
opening for exhauster	Ø 250		

750 40-250



TECHNICAL DATA

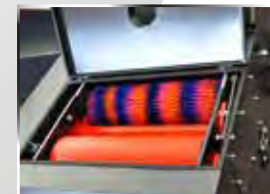
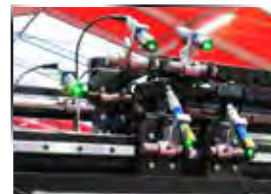
Main motor 45 / 55 / 75 kW
 Min/max. Cutthickness 40 mm / 250 mm
 Max cutting width 600 - 700 mm
 Max. diameter of circular blade \varnothing 450 mm / 90mm
 Max. number of circular blades 10 + 10 pieces
 opening for exhauster \varnothing 250

automatical conveyor for sawdust length 2200 mm
 laser 15 mW

Option: automatical outfeed conveyor with sorting

INCLUDED IN THE LINE

MACHINES CAN BE INDEPENDED OR INCLUDED IN LINE WITH MEH/AUTO. TRANSPORTERS



Sawing lines

SAWING LINE PROFI



Combination of selected bandsaw and circular saws provide maximum output of finish products in small area.

Min/ max diameter of log: depend of type of machine 120- 1500mm

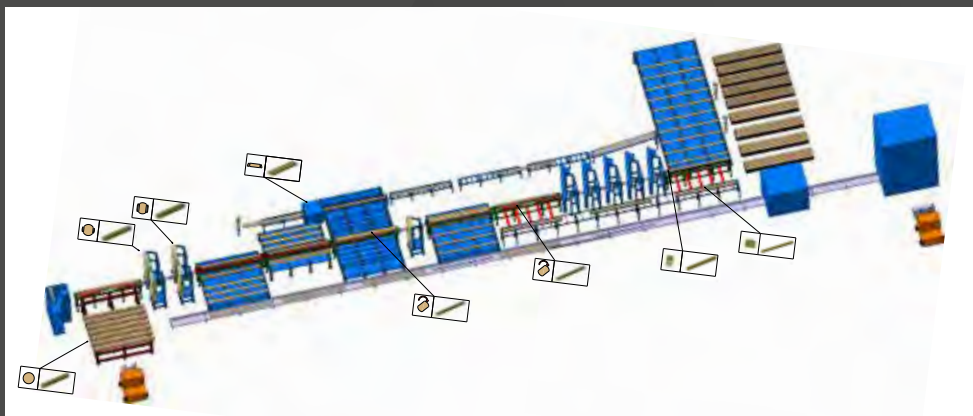
Min/max lenght of log: depend of type of machine 1- 16m



- sawdust extraction
- circular crossaw for cutting boards by length
- loading ramp
- bandsaw
- exit & transversal auto transporters
- multiblade circular saw for cutting boards by width

Sawing line WMH (Wravor multi head)

Sawing line is designed for sawmills which cut mainly small diameter logs and need automatic manipulation and operation.



MULTI CUT

SAWING LINE IS COMBINED WITH 2 different types of bandsaws, for optimum efficiency of different log diameters.

On separated lines we can cut small to big diameter and each line is optimized for their orders. Crossaws and circulars saws are computer- controlled for fast changing of different measures. Automatic conveyors collect final products on sorting and stacking lines.



SAWING LINE CS with circular saws



Automatic sawing line with multirip enables high productivity of cutted boards. It can be installed as parts of bandsaw cutting line or separately.



DEBARKERS

Debarkers for diameters from 200-1500mm with milling edges of log ends. We also offer sorting for debarked logs by lenght and diameter.



Loading and sorting

Self loading arms



Self loading arms are recommended for middle to small sized bandsaws, with lower capacity of manipulated logs.

Loading ramp i200 / i240 / i270 / i300



Optimum cutting capacity depends also from fast log feeding. We can offer wide range of logdecks for small/big, short / long logs with automatic logloading.

Conveyors for boards and prisms



Robust outfeed conveyor for boards works in automatic mode with sorting left/ right or straight.

Transversal conveyor



Transversal conveyors round line with multirip and edger into fully automatic line.

Outfeed conveyors + brushes



Cutted boards are removed from bandsaw by mechanical or automatic conveyor.
Boards can be cleaned with brushes.

Conveyor for prisms



Is located in front of the band saw, where prisms move automatically to side transversal conveyor.

Mechanical roller conveyor



Automatic cleaning conveyor for waste



Machines for circular and bandsaw blades maintenance

Machine for manual sharpening circular blades type WCM



TECHNICAL DATA

Motor	1 - 0,37 kw 2800 rpm
Tension	380 V
Diameter of sharpening	90 - 180 mm 180 - 500 mm
Distance between teeth	0 - 50 - 100 mm

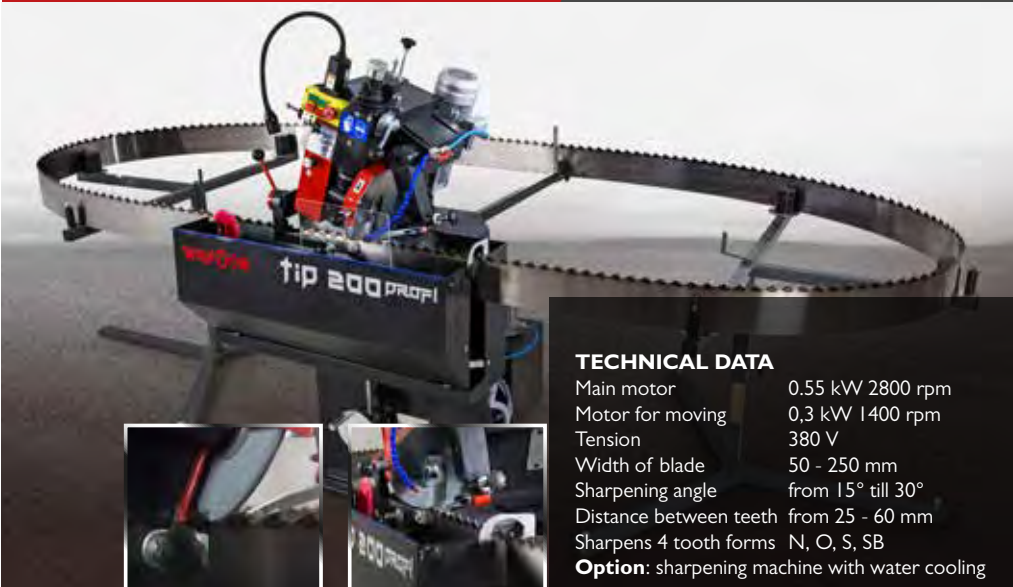
Automatical machine for sharpening circular blades type WCA



TECHNICAL DATA

Motor	1 - 0,37 kw 2800 rpm
Tension	380 V
Diameter of sharpening	90 - 180 mm 180 - 500 mm
Distance between teeth	0 - 50 - 100 mm

Sharpening machine for bandsaw blades type 200 PROFI



TECHNICAL DATA

Main motor	0,55 kW 2800 rpm
Motor for moving	0,3 kW 1400 rpm
Tension	380 V
Width of blade	50 - 250 mm
Sharpening angle	from 15° till 30°
Distance between teeth	from 25 - 60 mm
Sharpens 4 tooth forms	N, O, S, SB
Option:	sharpening machine with water cooling

Machine for welding bandsaw blades type WW

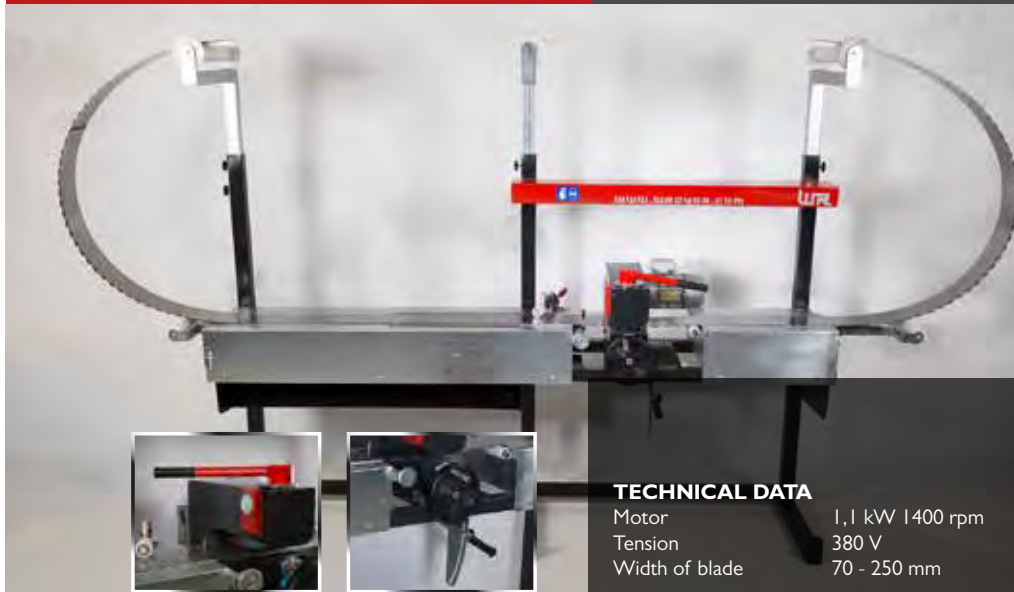


TECHNICAL DATA

Welding device	CO2 160/180 A 220/380 V
Width of blade	50 - 250 mm
Blade thickness	0,7 - 2,5 mm
Tension	220 V

We offer wide range of machines for circular and bandsaw blades maintenance

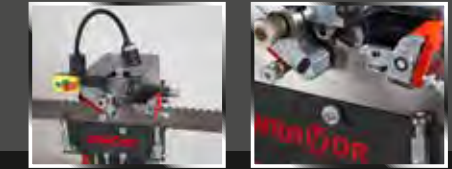
Machine for rolling bandsaw blades type WR with straighting table



TECHNICAL DATA

Motor	1,1 kW 1400 rpm
Tension	380 V
Width of blade	70 - 250 mm

Machine for automatic pressing and egalizing bandsaw blades type WAE



TECHNICAL DATA

Motor	1,1 kW 1400 rpm
Tension	380 V
Thickness of blade	0,9 mm till 1,4 mm
Tooth height	from 10 mm
Distance between teeth	from 25 - 60 mm
Width of blade	70 - 250 mm
Pressing speed	30 t/min

Options: Machine for manual egalizing bandsaw blades type WE, Machine for manual pressing bandsaw blades type WVP

Automatic stellite tipping machine type Wravor WWS



TECHNICAL DATA

Bandsawblade length	from 5300 mm
Bandsawblade width	70 - 280 mm (300 - 350+)
Bandsawblade thickness	0,9 - 3,6 mm
Length of welded stellite	from 3 - 8 mm
Tooth shape:	all types
Min tooth height	6 mm
Tooth step	25 - 50 mm (15 - 60 mm)
Tooth angle	15 - 30°

Automatic machine for side grinding stelite tipped blades type WCS



TECHNICAL DATA

Bandsawblade thickness	0 - 9 mm
Tooth shape:	all types
Tooth step	5 - 50 mm
Tooth side angle	from 0° - 8°
Bandsawblade length	from 5500 mm
Bandsawblade width	70 - 280 (300-350) mm

All new WRC,



performance by black series

WRC 1050 AC
performance



Combination of high – tech equipment with frequency controlled motors and movements.
Soft start & stop starting



Boards pushing hand with adjustable height & additional side holders



Pressurized blade guidances with oil mist cooling
Automatical oil and grease lubricating
Tracking forecutter



Robust and raised rails with automatical waste cleaners



All possible equipment for manipulating with log; movable logturners, patented fast log & prism turners, 2 levels of log grippers



Separated self standing control panel with seat and 2 joystick controlling.



ONCE & ALWAYS

www.wravor.com