



Pilous

Železná 9, 619 00 Brno, Czech Republic

Tel.: +420 543 25 20 10

e-mail: wood@pilous.cz, www.pilous.cz

CTR 550



3110 x 27-35 x 0,9 mm

Max. log diameter	550 mm
Max. opening between blade guides	400 mm
Max. elevation of blade	465 mm
Min. log height	20 mm
Max. depth of cut	200 mm
Max. log length (standard model)	3,6 m
Length track section	2,25 m
Min. log length	0,9 m
Saw blade motor	4 kW
Sawblade	3110 x 27÷35 x 0,9 mm
Weight (standard model)	250 kg
Weight (track section)	76 kg

Nominal current of circuit breaker is minimally 16 Ampere

DESCRIPTION

Feed into the cut and back – hand-operated

Arm height adjustment – manual

Control panel – on a mobile bridge

Log handling – manual

The smallest machine in the offer. It is designed primarily for cutting smaller volumes of lumber. Ideal solution for family farms, joiners' workshops or small sawmills. Very simple hand feed into the cut and back. The control panel is placed on a mobile bridge of the saw band arm. Thanks to that the operator has closer access to the workpiece when cutting. Height is adjusted using a hand crank with adjustable scale.

First machine of its type in the world that uses bimetallic saw band which is by default used in metal band saws.

That brings the following benefits:

- very simple operation
- single saw band cuts all types of wood without tooth adjustment (sharpening, tooth setting)
- elimination of tedious, technically challenging sharpening and setting of teeth
- you can immediately start cutting wood in professional quality without any necessary experience
- bimetallic saw band easily cuts metal materials in the log such as nails, shrapnel or bullets.
- professional three-side hardmetal saw band guidance in guiding heads and robust support of all rotary parts ensure high cutting accuracy and long service life of the saw band
- maximum accuracy, like in professional machines
- no need to purchase tooth sharpener and tooth setting machine
- easy accessibility and low cost of bimetallic saw bands

Total power input of the machine of 4 kW guarantees low operating costs and easy connection to mains. You may also use a special 35 x 0.9 mm bimetallic saw band instead of the 27 x 0.9 mm bimetallic saw band. Similarly to the metal-cutting bimetallic saw band it doesn't require any sharpening or tooth setting. You can also fit your machine with standard saw-cutting bands (35 x 0.9 mm) identical to those used in higher professional models CTR 710, 800 and 950. Larger teeth in these saw bands allow for increase of productivity when cutting large diameter logs. However, in the above mentioned saw bands it is necessary to sharpen and set the teeth regularly.

The arm is fitted with aluminium running wheels with accurate balancing against vibrations. The wheel has a groove along its circumference. The groove holds a replaceable rubber-textile belt which creates an optimum contact area between the wheel and the saw band.

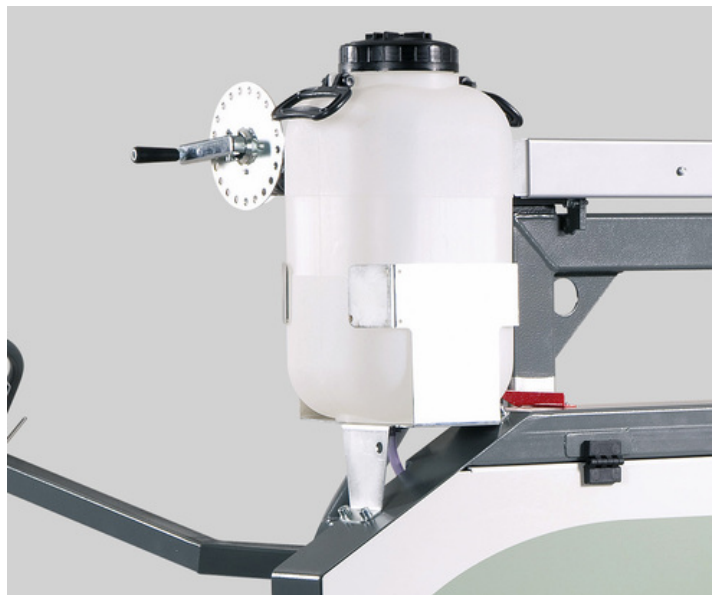
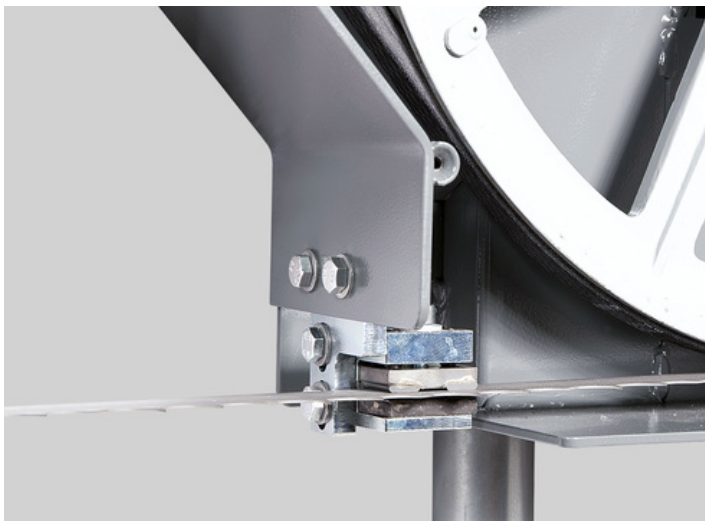
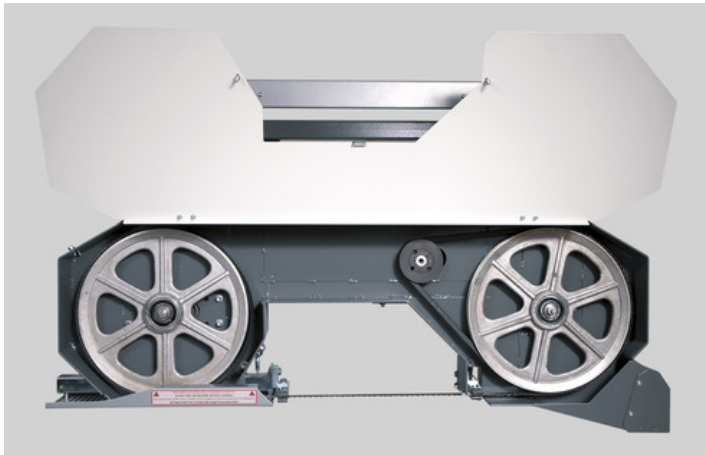
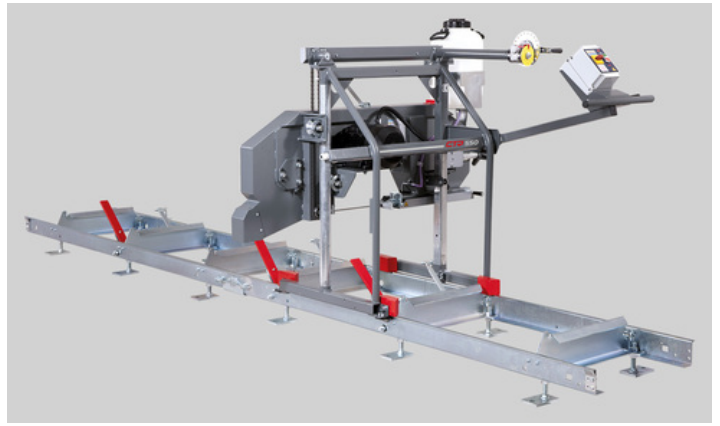
The sturdily mounted running wheel is powered through a wedge belt by a professional electrical motor specially balanced against vibrations.

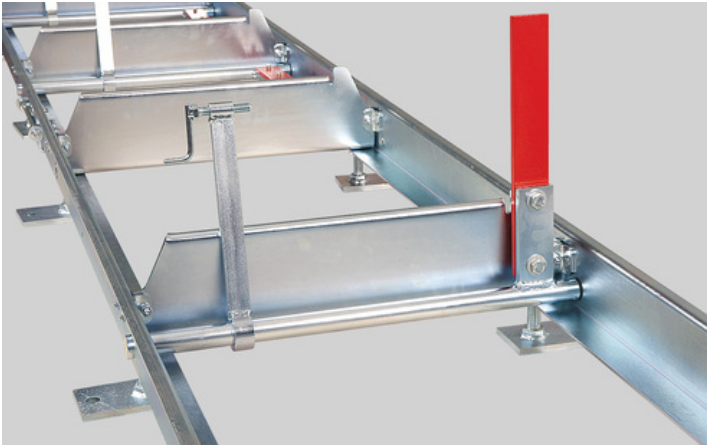
The tensioning wheel system moves within a solid cast iron guiding, which ensures long-term service life and setting accuracy even in long-term machine operation.

CTR series present the latest trends in construction of log saw bands with a special emphasis on maximum accuracy and long-term service life of the machine while ensuring minimum costs.

The machines are designed in an original modular execution which allows easy replacement or adjustment of all main technical sections and their individual parts. This in the long-term perspective reduces the maintenance costs and service times and therefore production stoppages as well.

PHOTOGALLERY





ACCESSORIES

ACCESSORIES – SPECIAL ACCESSORIES



2,25 m

Track section 2,25 m

Track section 2,25 m

Contain in basic: 3x cross beams, 1x angle arms, 1x material clamp
Variable points: 1x angle arm, 1x material clamp



Lever for log loading

Lever for log loading

Serves as help with manipulation with logs on machine frame.



Material clamp with variable square

Material clamp with variable square



Additional clamp arm

Additional clamp arm



Excentrický upínač

Eccentric clamp arm

For fast and easy log clamping.



Hand Operated Grease Gun

Hand operated grease gun

For regular maintenance of the machine according to the lubrication plan. Metal grease gun for 400g cartridges. Equipped with a flexible pressure tube.

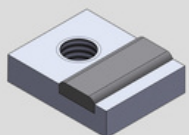


Grease LV 2-3

Grease LV 2-3

400g cartridge for the grease gun.

ACCESSORIES – CONSUMABLE PARTS



Hard-metal Plate 20 x 0.9 mm

Hard-metal plate 20 x 0.9 mm



Hard-metal Plate 12 x 4 mm

Hard-metal plate 12 x 4 mm

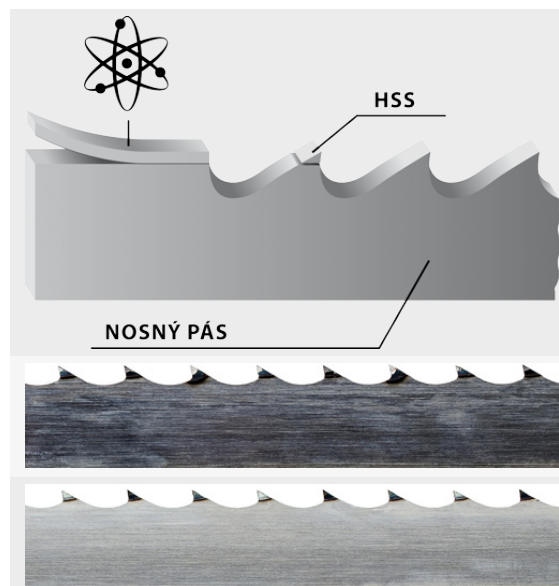


Running wheel wedge belt SPB
1500
Wheel wedge belt 17x1220 Li

Running Wheel
Wedge Belt SPB
1500 Wheel Wedge
Belt B 17x1220 Li



- The original saw blades PILOUS MAXwood are available in a variety of types which enables you to process any kind of wood.
- The wide product range not only offers more affordable saw blades for low-volume cutting, but includes also saw blades for fully professional cutting and utmost performance.
- The foundation of all saw blades are top-quality German materials and precise workmanship. The quality of the saw blades is carefully monitored. All saw blades correspond to the strict ISO 9001 norm.
- We have added to our portfolio also an original Munkfors saw blade made by the world's leading manufacturer Uddeholm from Sweden.
- Pilous saw blades are used in dozens of countries around the world. Any wood you cut, the company Pilous will recommend you a saw blade that will fit your needs.



BiMetal

Saw blade with tool steel teeth - completely eliminates the need to sharpen the saw blade as well as frequent blade replacement. Use: soft, hard to extremely hard wood.

HSS

Bearing blade

Stellite

Saw blade with teeth made of Stellite. Tooth setting is completely unnecessary. Use: soft, hard to extremely hard wood.

Carbon spring steel

The most common saw blade for optimum price/performance ratio. Use: soft and hard wood.



Be careful when unpacking welded saw blades. They are in a shipping container in tensioned condition. Remove the saw blade cover only after fitting it onto the machine.



Pilous

Železná 9, 619 00 Brno, Czech Republic

Tel.: +420 543 25 20 10

e-mail: wood@pilous.cz, www.pilous.cz

CTR 550 GX



3340 x 27-35 x 0,9 mm

Max. log diameter	550 mm
Max. opening between blade guides	500 mm
Max. elevation of blade	465 mm
Min. log height	20 mm
Max. depth of cut	200 mm
Max. log length (standard model)	3,6 m
Length track section	2,25 m
Min. log length	0,9 m
Saw blade motor	8,7 kW
Sawblade	3340 x 27÷35 x 0,9 mm
Weight (standard model)	265 kg
Weight (track section)	76 kg

DESCRIPTION

Feed into the cut and back – hand-operated

Arm height adjustment – manual

Control panel – on a mobile bridge

Log handling – manual

In contrast to the standard version the band saw is equipped with a professional Honda 8.7 kW (11 HP) petrol engine. Sufficient engine power allows trouble-free processing of logs of large diameters in all applications without the possibility of using an electric motor. Overall low weight allows easier transport of the machine. Due to higher weight and vibrations of petrol engine the construction of travelling bridge and saw band arm is completely reinforced. The smallest machine in the offer. It is designed primarily for cutting smaller volumes of lumber. Ideal solution for family farms, joiners' workshops or small sawmills. Very simple hand feed into the cut and back. The control panel is placed on a mobile bridge of the saw band arm. Thanks to that the operator has closer access to the workpiece when cutting. Height is adjusted using a hand crank with adjustable scale.

First machine of its type in the world that uses bimetallic saw band which is by default used in metal band saws.

That brings the following benefits:

- very simple operation
- single saw band cuts all types of wood without tooth adjustment (sharpening, tooth setting)
- elimination of tedious, technically challenging sharpening and setting of teeth
- you can immediately start cutting wood in professional quality without any necessary experience
- bimetallic saw band easily cuts metal materials in the log such as nails, shrapnel or bullets
- professional three-side hardmetal saw band guidance in guiding heads and robust support of all rotary parts ensure high cutting accuracy and long service life of the saw band
- maximum accuracy, like in professional machines
- no need to purchase tooth sharpener and tooth setting machine
- easy accessibility and low cost of bimetallic saw bands

You may also use a special 35 x 0.9 mm bimetallic saw band instead of the 27 x 0.9 mm bimetallic saw band. Similarly to the metal-cutting bimetallic saw band it doesn't require any sharpening or tooth setting. You can also fit your machine with standard saw-cutting bands (35 x 0.9 mm) identical to those used in higher professional models CTR 710, 800 and 950. Larger teeth in these saw bands allow for increase of productivity when cutting large diameter logs. However, in the above mentioned saw bands it is necessary to sharpen and set the teeth regularly.

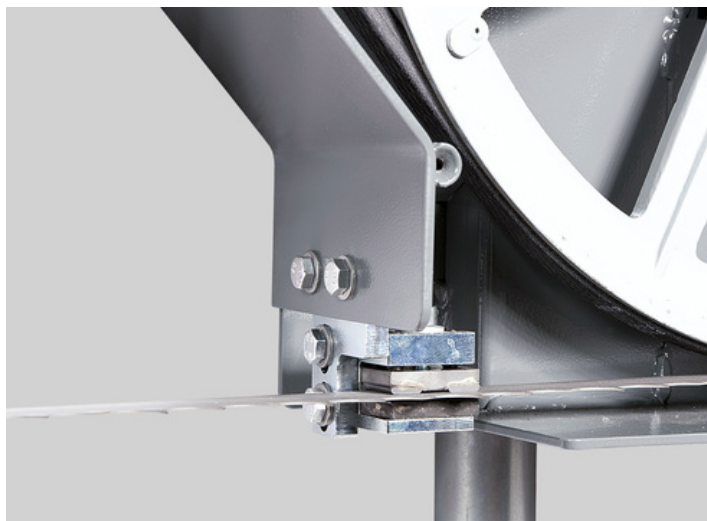
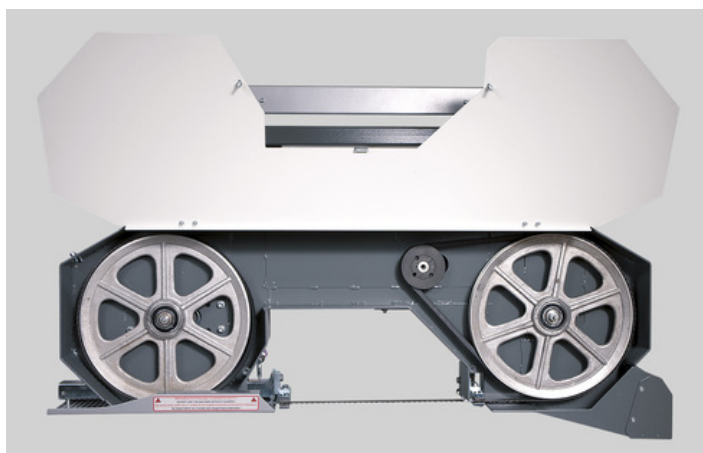
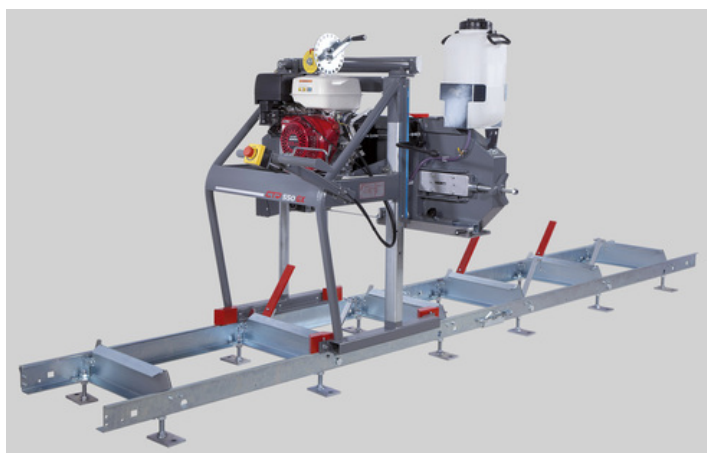
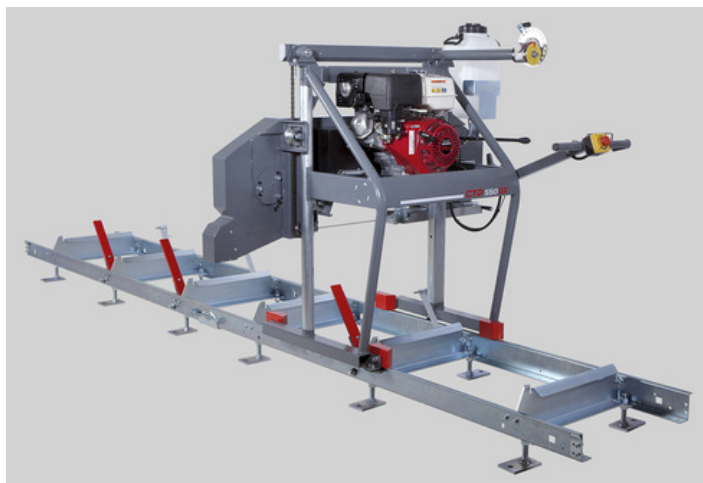
The arm is fitted with aluminium running wheels with accurate balancing against vibrations. The wheel has a groove along its circumference. The groove holds a replaceable rubber-textile belt which creates an optimum contact area between the wheel and the saw band.

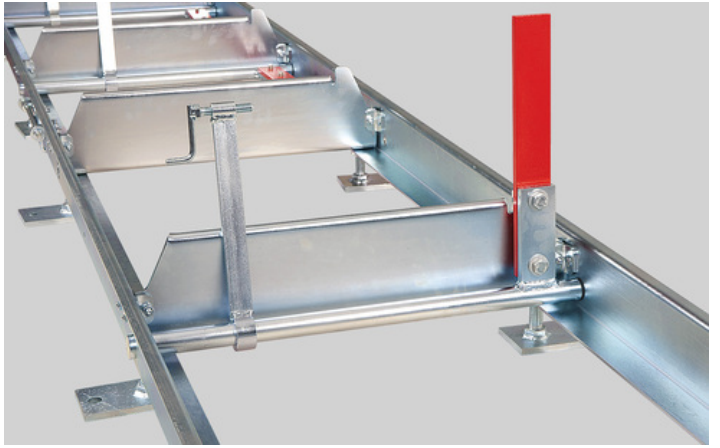
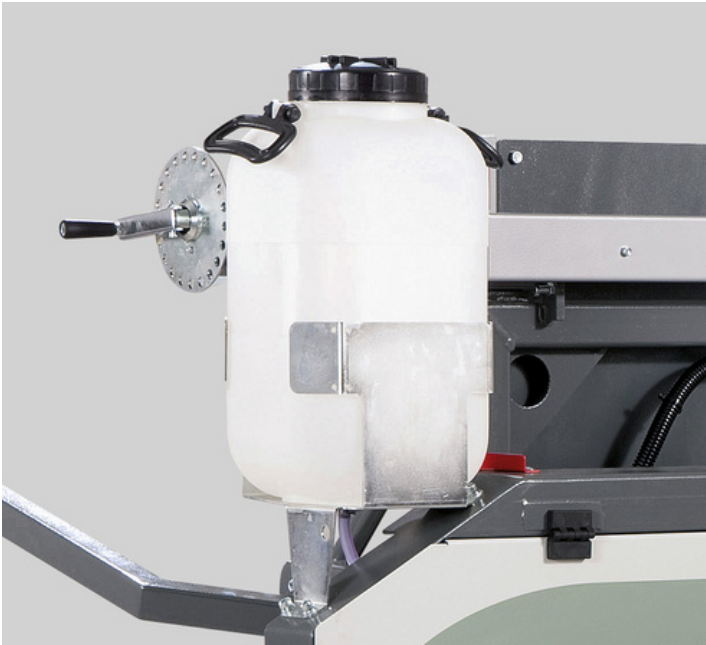
The sturdily mounted running wheel is powered through a wedge belt by a professional Honda petrol engine. Mechanical clutch lever enables an easy start of the engine and removal of the engine from the saw band when the cut had finished.

CTR series present the latest trends in construction of log saw bands with a special emphasis on maximum accuracy and long-term service life of the machine while ensuring minimum costs.

The machines are designed in an original modular execution which allows easy replacement or adjustment of all main technical sections and their individual parts. This in the long-term perspective reduces the maintenance costs and service times and therefore production stoppages as well.

PHOTOGALLERY





ACCESSORIES

ACCESSORIES – SPECIAL ACCESSORIES



2,25 m

Track section 2,25 m

Track section 2,25 m

Contain in basic: 3x cross beams, 1x angle arms, 1x material clamp
Variable points: 1x angle arm, 1x material clamp



Lever for log loading

Lever for log loading

Serves as help with manipulation with logs on machine frame.



Material clamp with variable square

Material clamp with variable square



Additional clamp arm

Additional clamp arm



Excentrický upínač

Eccentric clamp arm

For fast and easy log clamping.



Hand Operated Grease Gun

Hand operated grease gun

For regular maintenance of the machine according to the lubrication plan. Metal grease gun for 400g cartridges. Equipped with a flexible pressure tube.

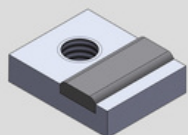


Grease LV 2-3

Grease LV 2-3

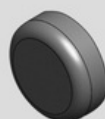
400g cartridge for the grease gun.

ACCESSORIES – CONSUMABLE PARTS



Hard-metal Plate 20 x 0.9 mm

Hard-metal plate 20 x 0.9 mm



Hard-metal Plate 9 x 6 mm

Hard-metal plate 9 x 6 mm

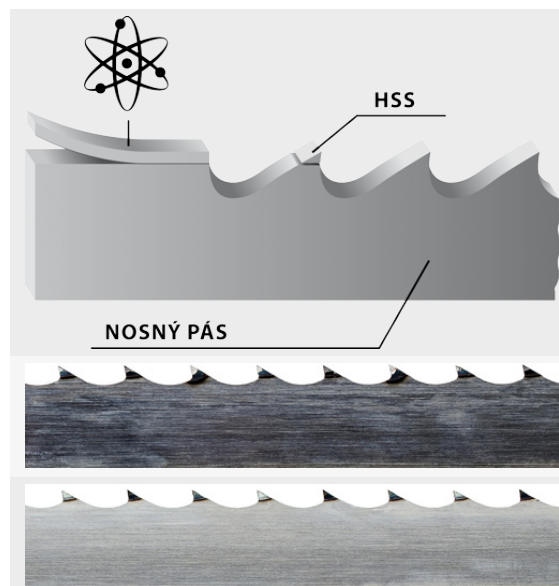


**Running wheel wedge belt
17x1420 Li
Wheel wedge belt 17x1220 Li**

**Running Wheel
Wedge Belt SPB
17x1420 Li Wheel
Wedge Belt 17x1220
Li**



- The original saw blades PILOUS MAXwood are available in a variety of types which enables you to process any kind of wood.
- The wide product range not only offers more affordable saw blades for low-volume cutting, but includes also saw blades for fully professional cutting and utmost performance.
- The foundation of all saw blades are top-quality German materials and precise workmanship. The quality of the saw blades is carefully monitored. All saw blades correspond to the strict ISO 9001 norm.
- We have added to our portfolio also an original Munkfors saw blade made by the world's leading manufacturer Uddeholm from Sweden.
- Pilous saw blades are used in dozens of countries around the world. Any wood you cut, the company Pilous will recommend you a saw blade that will fit your needs.



BiMetal

Saw blade with tool steel teeth - completely eliminates the need to sharpen the saw blade as well as frequent blade replacement. Use: soft, hard to extremely hard wood.

HSS

Bearing blade

Stellite

Saw blade with teeth made of Stellite. Tooth setting is completely unnecessary. Use: soft, hard to extremely hard wood.

Carbon spring steel

The most common saw blade for optimum price/performance ratio. Use: soft and hard wood.



Be careful when unpacking welded saw blades. They are in a shipping container in tensioned condition. Remove the saw blade cover only after fitting it onto the machine.



Pilous

Železná 9, 619 00 Brno, Czech Republic

Tel.: +420 543 25 20 10

e-mail: wood@pilous.cz, www.pilous.cz

CTR 710 GX



4140 x 34-41 x 0,9-1,1 mm

Max. log diameter	710 mm
Max. opening between blade guides	660 mm
Max. elevation of blade	630 mm
Min. blade height from support beam	30 mm
Max. depth of cut	450 mm
Max. log length (standard model)	2,1 m
Length track section	1 m / 3 m
Min. log length	1 m
Saw blade motor	15,5 kW
Vertical feed motor	-
Sawblade	4140 x 35÷40 x 0,9÷1,1 mm
Weight (standard model) inclusive accessories	525 kg
Weight (track section)	25 kg / 97 kg

DESCRIPTION

Feed into the cut and back – hand-operated
Arm height adjustment – manual
Control panel – on a mobile bridge
Log handling – manual

In contrast to the standard version the band saw is equipped with a professional Kohler two-cylinder four-stroke 15,5 kW (21 HP) petrol engine with electric start. Sufficient engine power ensures high performance of the machine even when processing logs of large diameters in all applications without the possibility of using an electric motor.

Smaller, but truly professional saw band in all respects. Execution of main technical parts, such as the running wheels in their mounts, construction of the saw band arm, engine and feeding systems, etc., are completely identical to those in CTR 800 series or in very powerful CTR 950 Hydraulik series.

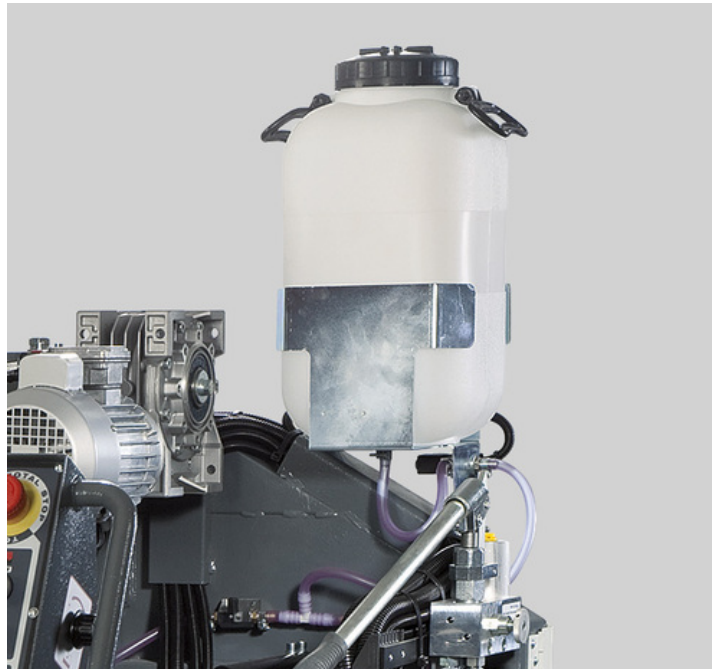
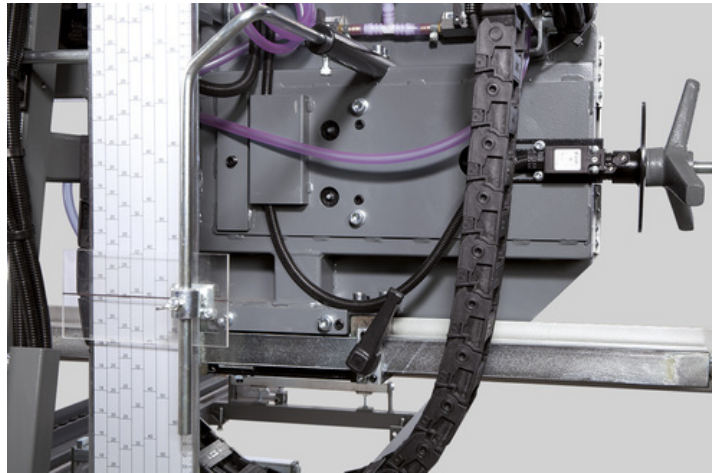
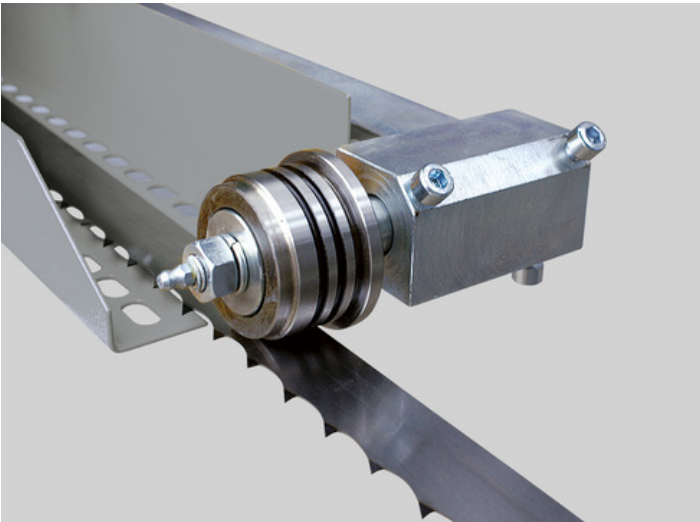
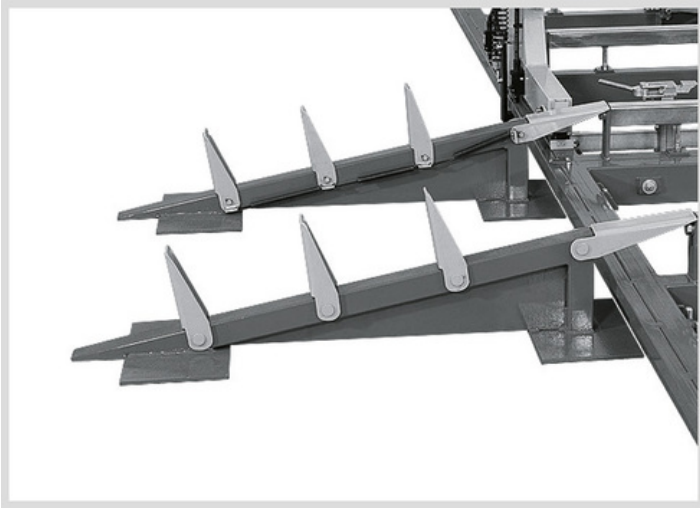
Simple hand feed into the cut and back. Height is adjusted using a hand crank with adjustable scale. In this version of the machine the control panel is placed on a mobile bridge of the saw band arm. Thanks to that the operator has closer access to the workpiece when cutting.

The massive saw band arm is borne on adjustable hard-chromium rods (for moving up and down) which ensure absolute accuracy of saw band arm movement and virtually unlimited service life, if the machine is lubricated regularly. The arm is fitted with running wheels made of high-quality grey cast iron with accurate balancing against vibrations. The wheel has a groove along its circumference. The groove holds a replaceable rubber-textile belt which creates an optimum contact area between the wheel and the saw band.

The sturdily mounted running wheel is powered through a wedge belt by a professional Kohler petrol engine. Centrifugal clutch enables an easy start of the engine and removal of the engine from the saw band when the cut had finished. The tensioning wheel system moves along a sturdy cast iron wedge guide with adjustable pressure bar, which allows highly accurate adjustment without any free travel even in long-term machine operation.

CTR series present the latest trends in construction of log saw bands with a special emphasis on maximum accuracy and long-term service life of the machine while ensuring minimum costs. The machines are designed in an original modular execution which allows easy replacement or adjustment of all main technical sections and their individual parts. This in the long-term perspective reduces the maintenance costs and service times and therefore production stoppages as well.

PHOTOGALLERY



ACCESSORIES

ACCESSORIES – SPECIAL ACCESSORIES



1 m (3 m)

Track section 1 m

Track section

1 meter – basic rails only
3 meter – contain in basic: 3x cross beams, 2x angle arms.
Another variable points: 3x material clamps.



Lever for log loading

Lever for log loading

Serves as help with manipulation with logs on machine frame.



Material Clamp

Material Clamp

Consists of a rail and a front and rear clamp.



Route for feeding logs

Route for feeding logs

Provides easy and safe manipulation on machine cross beams with system of flexible stops.



Hand Operated Grease Gun

Hand operated grease gun

For regular maintenance of the machine according to the lubrication plan. Metal grease gun for 400g cartridges. Equipped with a flexible pressure tube.

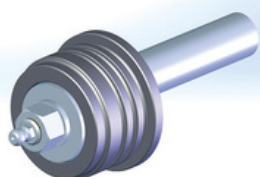


Grease LV 2-3

Grease LV 2-3

400g cartridge for the grease gun.

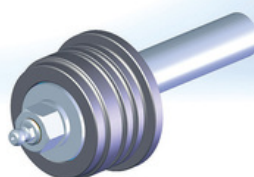
ACCESSORIES – CONSUMABLE PARTS



Saw Band Guide Pulley VK 35

Saw band guide pulley VK 35

Hardened ground pulley, bearings, shaft for a saw band 35 mm wide.



Saw Band Guide Pulley VK 40

Saw band guide pulley VK 40

Hardened ground pulley, bearings, shaft for a saw band 40 mm wide.

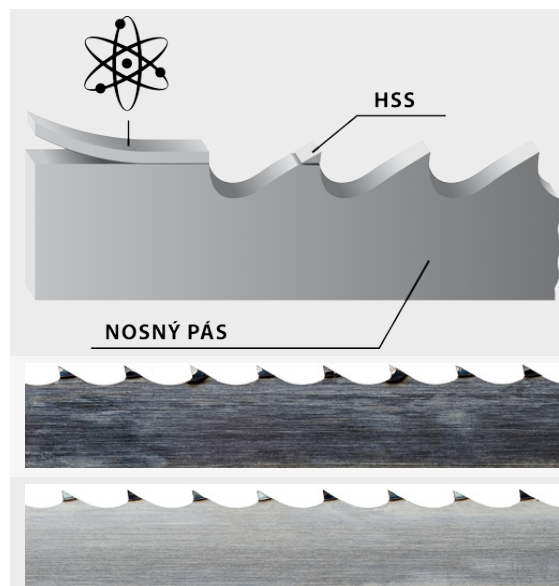


Flat Running Wheel Belt GPK 1550

Flat running wheel belt GPK 1550



- The original saw blades PILOUS MAXwood are available in a variety of types which enables you to process any kind of wood.
- The wide product range not only offers more affordable saw blades for low-volume cutting, but includes also saw blades for fully professional cutting and utmost performance.
- The foundation of all saw blades are top-quality German materials and precise workmanship. The quality of the saw blades is carefully monitored. All saw blades correspond to the strict ISO 9001 norm.
- We have added to our portfolio also an original Munkfors saw blade made by the world's leading manufacturer Uddeholm from Sweden.
- Pilous saw blades are used in dozens of countries around the world. Any wood you cut, the company Pilous will recommend you a saw blade that will fit your needs.



BiMetal

Saw blade with tool steel teeth - completely eliminates the need to sharpen the saw blade as well as frequent blade replacement. Use: soft, hard to extremely hard wood.

HSS

Bearing blade

Stellite

Saw blade with teeth made of Stellite. Tooth setting is completely unnecessary. Use: soft, hard to extremely hard wood.

Carbon spring steel

The most common saw blade for optimum price/performance ratio. Use: soft and hard wood.



Be careful when unpacking welded saw blades. They are in a shipping container in tensioned condition. Remove the saw blade cover only after fitting it onto the machine.



Pilous

Železná 9, 619 00 Brno, Czech Republic

Tel.: +420 543 25 20 10

e-mail: wood@pilous.cz, www.pilous.cz

CTR 710 M



4140 x 34-41 x 0,9-1,1 mm

Max. log diameter	710 mm
Max. opening between blade guides	660 mm
Max. elevation of blade	630 mm
Min. log height	30 mm
Max. depth of cut	450 mm
Max. log length (standard model)	2,1 m
Length track section	1 m / 3 m
Min. log length	1 m
Saw blade motor	5,5 (7,5) kW
Vertical feed motor	0,55 kW
Sawblade	4140 x 35÷40 x 0,9÷1,1 mm
Weight (standard model)	680 kg
Weight (track section)	25 kg / 97 kg

Nominal current of circuit breaker is minimally 20 / 32 Ampere

DESCRIPTION

Feed into the cut and back – hand-operated
Arm height adjustment – motor-powered
Control panel – on a mobile bridge
Log handling – manual

Smaller, but truly professional saw band in all respects. Execution of main technical parts, such as the running wheels in their mounts, construction of the saw band arm, engine and feeding systems, etc., are completely identical to those in CTR 800 series or in very powerful CTR 950 Hydraulik and CTR 1000 H/40. Simple hand feed into the cut and back. Motor-powered saw band arm height adjustment. In this version of the machine the control panel is placed on a mobile bridge of the saw band arm. Thanks to that the operator has closer access to the workpiece when cutting.

The massive saw band arm is borne on adjustable hard-chromium rods (for moving up and down) which ensure absolute accuracy of saw band arm movement and virtually unlimited service life, if the machine is lubricated regularly. The vertical movement of the arm is provided by double-sided synchronous chain transmission powered by an electric motor with worm gearbox. The movement controlled from the central panel has two modes of speed – rapid feed and slow feed for accurate movement to a desired position. This system can be always additionally equipped with electronic metering which automatically moves to the specified position.

The arm is fitted with running wheels made of high-quality grey cast iron with accurate balancing against vibrations.

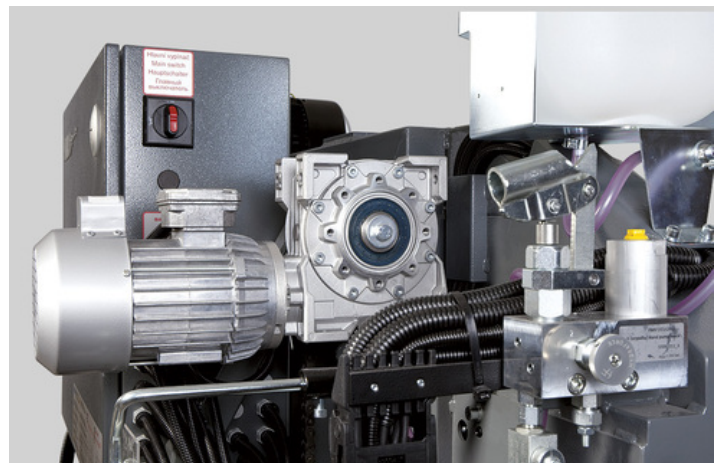
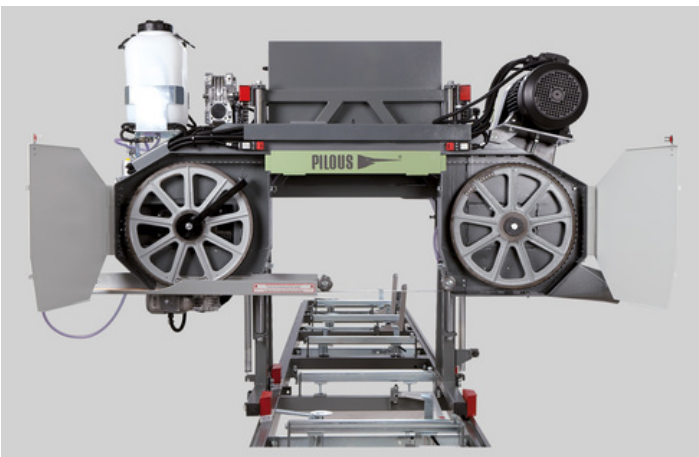
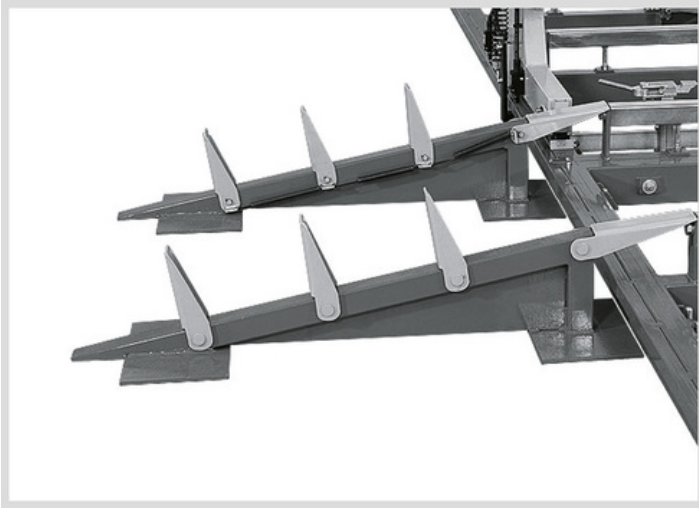
The wheel has a groove along its circumference. The groove holds a replaceable rubber-textile belt which creates an optimum contact area between the wheel and the saw band.

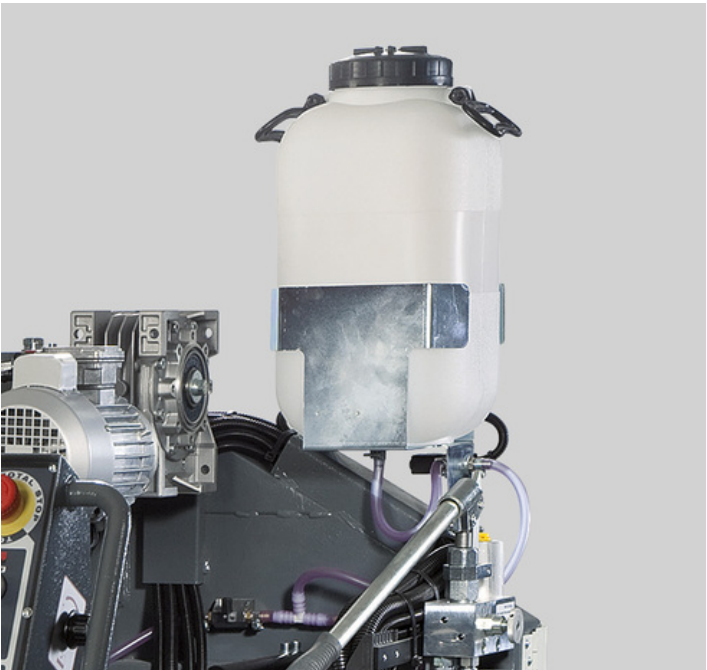
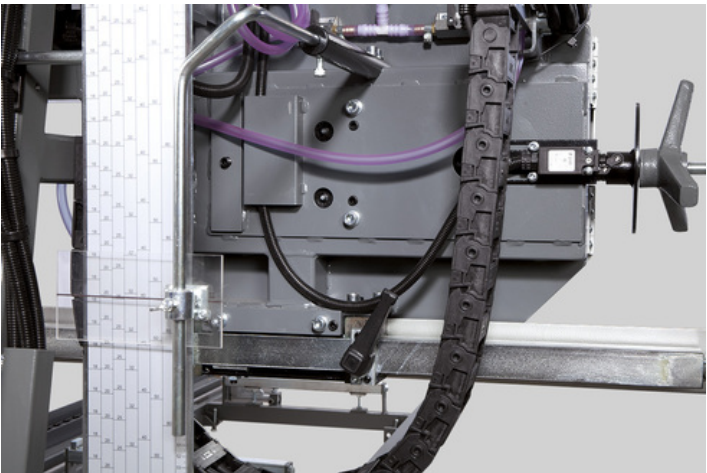
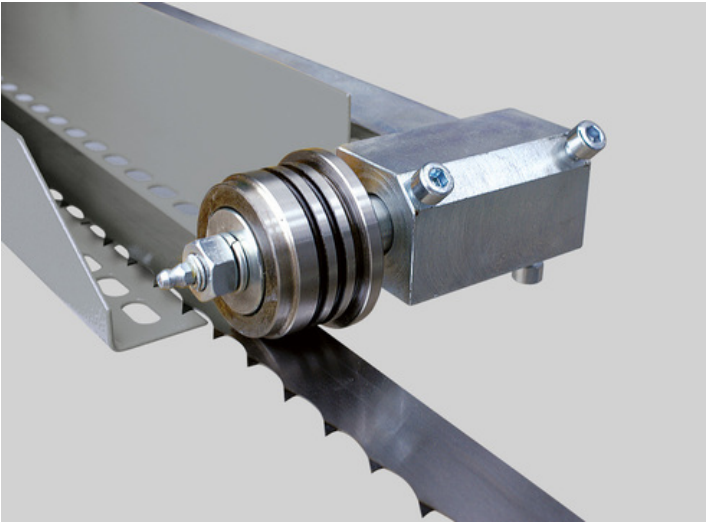
The sturdily mounted running wheel is powered through a wedge belt by a professional electrical motor specially balanced against vibrations.

The tensioning wheel system moves along a sturdy cast iron wedge guide with adjustable pressure bar, which allows highly accurate adjustment without any free travel even in long-term machine operation.

CTR series present the latest trends in construction of log saw bands with a special emphasis on maximum accuracy and long-term service life of the machine while ensuring minimum costs. The machines are designed in an original modular execution which allows easy replacement or adjustment of all main technical sections and their individual parts. This in the long-term perspective reduces the maintenance costs, service times and therefore production stoppages as well.

PHOTOGALLERY





ACCESSORIES

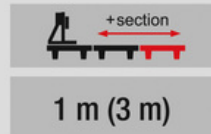
ACCESSORIES – SPECIAL ACCESSORIES



Main motor 7,5 kW

Main motor 7,5 kW

Stronger output of motor provides faster cut, mainly with huge diameters of logs.



Track section 1 m

Track section

1 meter – basic rails only
3 meter – contain in basic: 3x cross beams, 2x angle arms.
Another variable points: 3x material clamps.



LG 100

LG 100

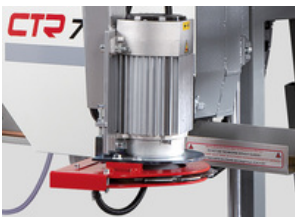
It is intended for a quick and accurate setting of required board thickness. The movement of the band saw arm up and down is displayed with an accuracy of 0.1 mm on a colour display. The absolute height from the band saw bed or, after reset, the set board thickness including the optional kerf thickness is displayed.



LG Automat

LG automat

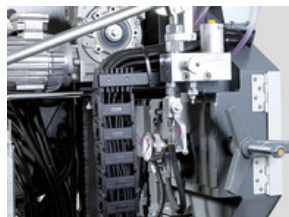
Digital measuring system for fast and accurate automatic setting of the desired thickness of the cut. After the specification of basic settings (height from the loading area and cut-through) and of the desired value (cut thickness), the arm with a saw band will automatically move to the required position. That prevents human-induced failures that can arise during manual cut settings. Saves time, refines production.



Pre-cutter

Precutter

The pre-cutter circular with hard metal tips is designed to remove dirt at points where the saw blade cuts into the log. The saw blade do not get blunt quickly. Frequent saw blade exchanges are reduced, the saw blade life, and the productivity of the machine increase.



Hydraulic saw blade straining

Hydraulic saw blade straining

Operated by a hydraulic hand pump with accurate pressure indication. The saw blade straining is more accurate and convenient.



Ammeter

Ammeter

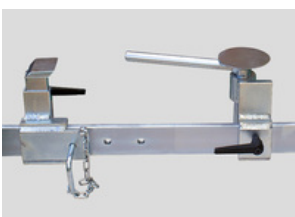
The ammeter scale shows the saw blade engine load during the cut. It is designed to simplify the selection of the feed speed; it also indicates the saw blade bluntness. A timely exchange of the saw blade increases the life-span and improves the cutting quality.



Lever for log loading

Lever for log loading

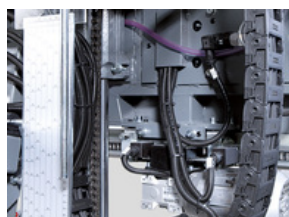
Serves as help with manipulation with logs on machine frame.



Material Clamp

Material Clamp

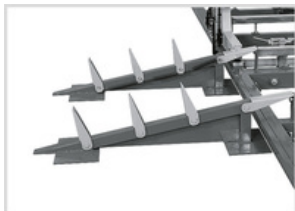
Consists of a rail and a front and rear clamp.



Electrically controlled bar 710

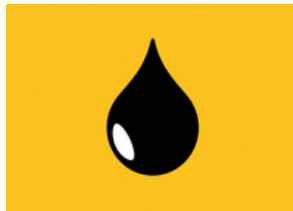
Electrically controlled bar

Adjustment of sliding guide bar of the saw blade depending on the log diameter electrically controlled from the central control desk.



Route for feeding logs

Route for feeding logs
Provides easy and safe manipulation on machine cross beams with system of flexible stops.



Saw band cooling control

Saw band cooling control
Integrated in the cooling system is an electromagnetic through-flow valve, which automatically opens when the saw blade is started and closes when the saw blade is stopped. It substantially lowers the coolant consumption and saves time needed for replenishment of coolant liquid.



Pressure two-sided saw band cooling

Pressure two-sided saw band cooling
The cooling system consists of a pressure pump in the coolant tank, flow control solenoid valve and two-way jets that spray the saw band both from below and from above. Two-side cooling prevents undesirable stress in the saw band and adhesion of resin from underneath the saw band and thus helps maintain stabler saw band operation, more accurate cut and longer service life.



ARCTIC version

ARCTIC version
Version of the machine adapted for work in extremely cold operating temperatures reaching down to -40°C . Machine's switch board, control panel and digital measuring (LG 100, LG Automat) are fitted with heating elements. The heating is controlled through a thermostat. Frost-resistant lubricant. Band saws CTR 800 H, 950 H, 1000 H and 1300 H use frost-resistant hydraulic oil.



Hand Operated Grease Gun

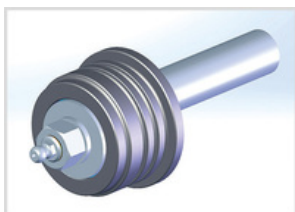
Hand operated grease gun
For regular maintenance of the machine according to the lubrication plan. Metal grease gun for 400g cartridges. Equipped with a flexible pressure tube.



Grease LV 2-3

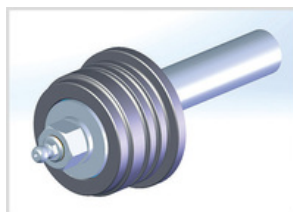
Grease LV 2-3
400g cartridge for the grease gun.

ACCESSORIES – CONSUMABLE PARTS



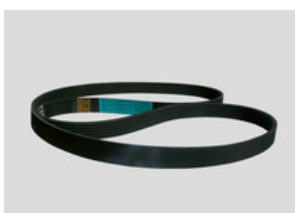
Saw Band Guide Pulley VK 35

Saw band guide pulley VK 35
Hardened ground pulley, bearings, shaft for a saw band 35 mm wide.



Saw Band Guide Pulley VK 40

Saw band guide pulley VK 40
Hardened ground pulley, bearings, shaft for a saw band 40 mm wide.

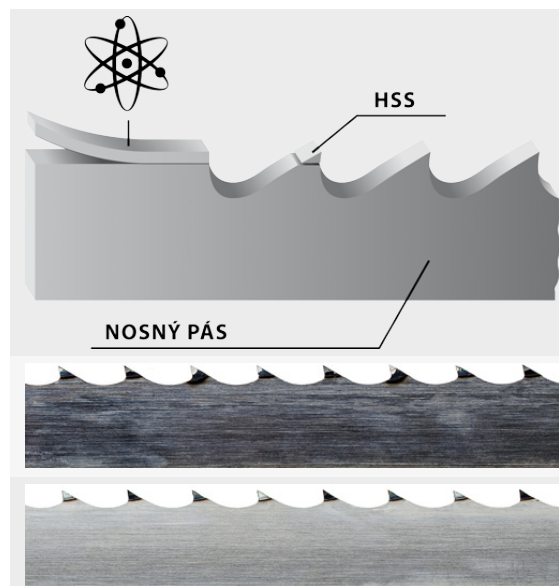


Flat Running Wheel Belt GPK 1550

Flat running wheel belt GPK 1550



- The original saw blades PILOUS MAXwood are available in a variety of types which enables you to process any kind of wood.
- The wide product range not only offers more affordable saw blades for low-volume cutting, but includes also saw blades for fully professional cutting and utmost performance.
- The foundation of all saw blades are top-quality German materials and precise workmanship. The quality of the saw blades is carefully monitored. All saw blades correspond to the strict ISO 9001 norm.
- We have added to our portfolio also an original Munkfors saw blade made by the world's leading manufacturer Uddeholm from Sweden.
- Pilous saw blades are used in dozens of countries around the world. Any wood you cut, the company Pilous will recommend you a saw blade that will fit your needs.



BiMetal

Saw blade with tool steel teeth - completely eliminates the need to sharpen the saw blade as well as frequent blade replacement. Use: soft, hard to extremely hard wood.

HSS

Bearing blade

Stellite

Saw blade with teeth made of Stellite. Tooth setting is completely unnecessary. Use: soft, hard to extremely hard wood.

Carbon spring steel

The most common saw blade for optimum price/performance ratio. Use: soft and hard wood.



Be careful when unpacking welded saw blades. They are in a shipping container in tensioned condition. Remove the saw blade cover only after fitting it onto the machine.



Pilous

Železná 9, 619 00 Brno, Czech Republic

Tel.: +420 543 25 20 10

e-mail: wood@pilous.cz, www.pilous.cz

CTR 750



4140 x 34-35 x 0,9-1,0 mm

Max. log diameter	750 mm
Max. opening between blade guides	640 mm
Max. elevation of blade	660 mm
Min. log height	25 mm
Max. depth of cut	255 mm
Max. log length (standard model)	3,45 m
Length track section	2,25 m
Min. log length	0,75 m
Saw blade motor	5,5 kW
Sawblade	4140 x 34 x 1,1 mm
Weight (standard model)	445 kg
Weight (track section)	96 kg

Nominal current of circuit breaker is minimally 16 Ampere

DESCRIPTION

Feed into the cut and back – hand-operated

Arm height adjustment – manual

Control panel – on a mobile bridge

Log handling – manual

The bigger and stronger version of the popular CTR 550 allows for processing of logs up to 75 cm in diameter. It also uses a bimetallic metal-cutting saw bands, but it is one size bigger. While the size of the bimetallic saw band in CTR 550 is 27 x 0.9 mm, the size of the band in CTR 750 is 34 x 1.1 mm which, combined with a powerful 5.5 kW engine can deal with logs of large diameters. Simple hand feed into the cut and back. Height is adjusted using a hand crank with adjustable scale.

Use of a bimetallic saw band which is normally used in metal band saws brings following advantages:

- very simple operation
- single saw band cuts all types of wood without tooth adjustment (sharpening, tooth setting)
- elimination of tedious, technically challenging sharpening and setting of teeth
- you can immediately start cutting wood in professional quality without any necessary experience
- bimetallic saw band easily cuts metal materials in the log such as nails, shrapnel or bullets
- professional three-side hardmetal saw band guidance in guiding heads and robust support of all rotary parts ensure high cutting accuracy and long service life of the saw band
- maximum accuracy, like in professional machines
- no need to purchase tooth sharpener and tooth setting machine
- easy accessibility and low cost of bimetallic saw bands

Powerful 5.5 kW engine ensures full power during fully professional cutting, cutting of high-quality round timber or when cutting very hard materials. Instead of bimetallic metal-cutting band sized 34 x 1.1 mm you can use a special bime-

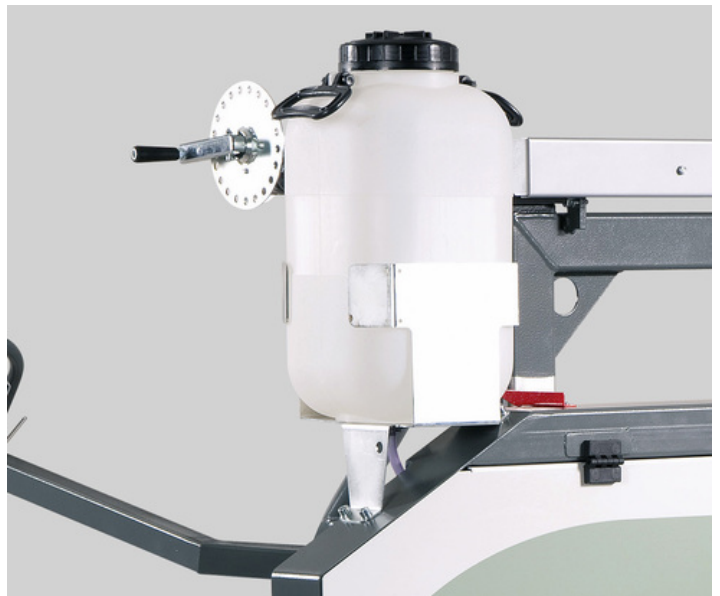
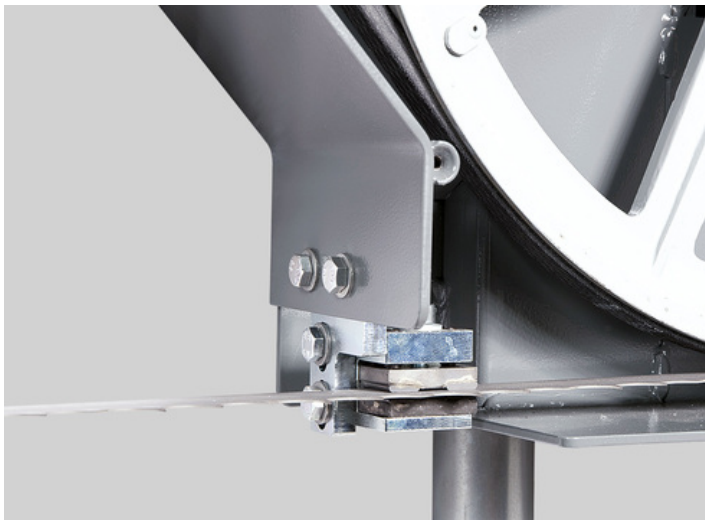
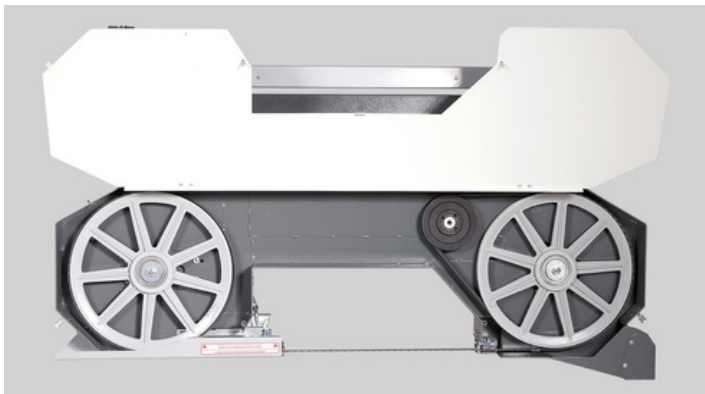
tallic wood-cutting band sized 35 x 0.9 mm which (same as the bimetallic metal-cutting band) does not require sharpening and setting of teeth. You can also fit your machine with standard saw-cutting bands (35 x 0.9 mm) identical to those used in higher professional models CTR 710, 800 and 950. Larger teeth in these saw bands allow for increase of productivity when cutting large diameter logs. However, in the above mentioned saw bands it is necessary to sharpen and set the teeth regularly.

The arm is fitted with large aluminium running wheels with accurate balancing against vibrations. The wheel has a groove along its circumference. The groove holds a replaceable rubber-textile belt which creates an optimum contact area between the wheel and the saw band.

The sturdily mounted running wheel is powered through a wedge belt by a professional electrical motor specially balanced against vibrations. The tensioning wheel system moves within a solid cast iron guiding, which ensures long-term service life and setting accuracy even in long-term machine operation.

CTR series present the latest trends in construction of log saw bands with a special emphasis on maximum accuracy and long-term service life of the machine while ensuring minimum costs. The machines are designed in an original modular execution which allows easy replacement or adjustment of all main technical sections and their individual parts. This in the long-term perspective reduces the maintenance costs and service times and therefore production stoppages as well.

PHOTOGALLERY





ACCESSORIES

ACCESSORIES – SPECIAL ACCESSORIES



2,25 m

Track section 2,25 m

Track section 2,25 m

Contain in basic: 3x cross beams, 1x angle arms, 1x material clamp
Variable points: 1x angle arm, 1x material clamp



Lever for log loading

Lever for log loading

Serves as help with manipulation with logs on machine frame.



Material clamp with variable square

Material clamp with variable square



Additional clamp arm

Additional clamp arm



Excentrický upínač

Eccentric clamp arm

For fast and easy log clamping.



Hand Operated Grease Gun

Hand operated grease gun

For regular maintenance of the machine according to the lubrication plan. Metal grease gun for 400g cartridges. Equipped with a flexible pressure tube.



Grease LV 2-3

Grease LV 2-3

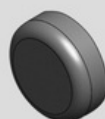
400g cartridge for the grease gun.

ACCESSORIES – CONSUMABLE PARTS



Hard-metal Plate 2 x 25 x 0,9 mm

Hard-metal plate 2 x 25 x 0,9 mm



Hard-metal Plate 12 x 4 mm

Hard-metal plate 12 x 4 mm



Running wheel wedge belt SPB

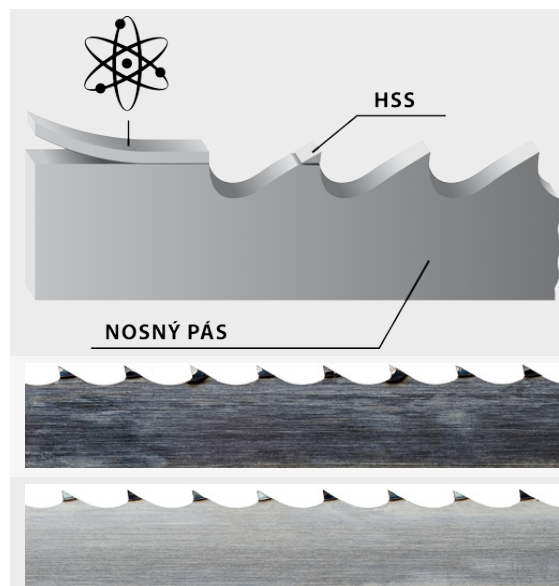
1850

Wheel wedge belt B 17x1560 Lw

**Running Wheel
Wedge Belt SPB
1850 Wheel Wedge
Belt 17x1560 Lw**



- The original saw blades PILOUS MAXwood are available in a variety of types which enables you to process any kind of wood.
- The wide product range not only offers more affordable saw blades for low-volume cutting, but includes also saw blades for fully professional cutting and utmost performance.
- The foundation of all saw blades are top-quality German materials and precise workmanship. The quality of the saw blades is carefully monitored. All saw blades correspond to the strict ISO 9001 norm.
- We have added to our portfolio also an original Munkfors saw blade made by the world's leading manufacturer Uddeholm from Sweden.
- Pilous saw blades are used in dozens of countries around the world. Any wood you cut, the company Pilous will recommend you a saw blade that will fit your needs.



BiMetal

Saw blade with tool steel teeth - completely eliminates the need to sharpen the saw blade as well as frequent blade replacement. Use: soft, hard to extremely hard wood.

HSS

Bearing blade

Stellite

Saw blade with teeth made of Stellite. Tooth setting is completely unnecessary. Use: soft, hard to extremely hard wood.

Carbon spring steel

The most common saw blade for optimum price/performance ratio. Use: soft and hard wood.



Be careful when unpacking welded saw blades. They are in a shipping container in tensioned condition. Remove the saw blade cover only after fitting it onto the machine.



Pilous

Železná 9, 619 00 Brno, Czech Republic

Tel.: +420 543 25 20 10

e-mail: wood@pilous.cz, www.pilous.cz

CTR 750 GX



4140 x 34-35 x 0,9-1,0 mm

Max. log diameter	750 mm
Max. opening between blade guides	620 mm
Max. elevation of blade	660 mm
Min. log height	25 mm
Max. depth of cut	255 mm
Max. log length (standard model)	3,45 m
Length track section	2,25 m
Min. log length	0,75 m
Saw blade motor	8,7 kW (11 HP)
Sawblade	4140 x 34 x 1,1 mm
Weight (standard model)	455 kg
Weight (track section)	96 kg

DESCRIPTION

Feed into the cut and back – hand-operated

Arm height adjustment – manual

Control panel – on a mobile bridge

Log handling – manual

In contrast to the standard version the band saw is equipped with a professional Honda 8.7 kW (11 HP) petrol engine. Sufficient engine power allows trouble-free processing of logs of large diameters in all applications without the possibility of using an electric motor. Overall low weight allows easier transport of the machine. Due to higher weight and vibrations of petrol engine the construction of travelling bridge and saw band arm is completely reinforced. It is designed primarily for cutting smaller volumes of lumber. Ideal solution for family farms, joiners' workshops or small sawmills. Very simple hand feed into the cut and back. The control panel is placed on a mobile bridge of the saw band arm. Thanks to that the operator has closer access to the workpiece when cutting. Height is adjusted using a hand crank with adjustable scale.

The bigger and stronger version of the popular CTR 550 allows for processing of logs up to 75 cm in diameter. It also uses a bimetallic metal-cutting saw bands, but it is one size bigger. While the size of the bimetallic saw band in CTR 550 is 27 x 0.9 mm, the size of the band in CTR 750 is 34 x 1.1 mm which, combined with a powerful 5.5 kW engine can deal with logs of large diameters. Simple hand feed into the cut and back. Height is adjusted using a hand crank with adjustable scale.

Use of a bimetallic saw band which is normally used in metal band saws brings following advantages:

- very simple operation
- single saw band cuts all types of wood without tooth adjustment (sharpening, tooth setting)
- elimination of tedious, technically challenging sharpening and setting of teeth
- you can immediately start cutting wood in professional quality without any necessary experience
- bimetallic saw band easily cuts metal materials in the log such as nails, shrapnel or bullets
- professional three-side hardmetal saw band guidance in guiding heads and robust support of all rotary parts ensure high cutting accuracy and long service life of the saw band
- maximum accuracy, like in professional machines
- no need to purchase tooth sharpener and tooth setting machine
- easy accessibility and low cost of bimetallic saw bands

Powerful 5.5 kW engine ensures full power during fully professional cutting, cutting of high-quality round timber or when cutting very hard materials. Instead of bimetallic metal-cutting band sized 34 x 1.1 mm you can use a special bime-

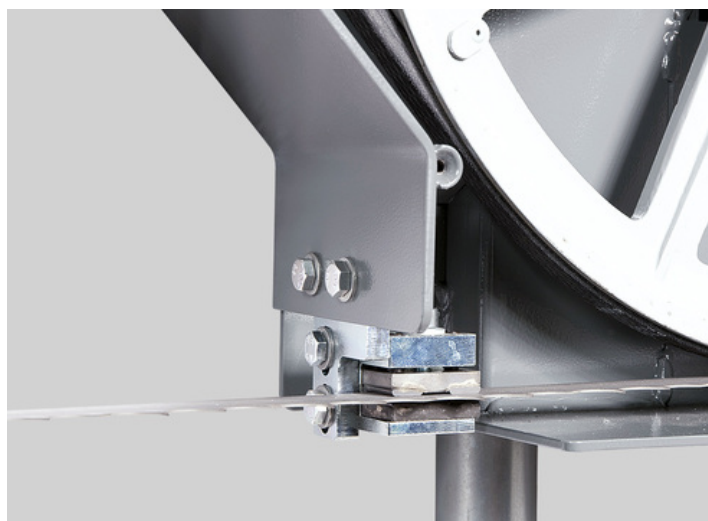
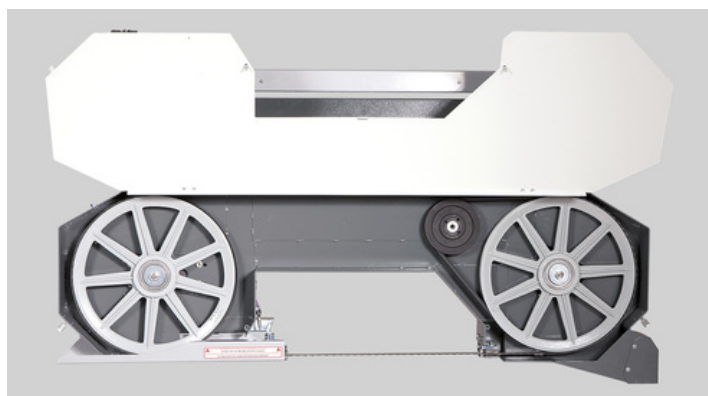
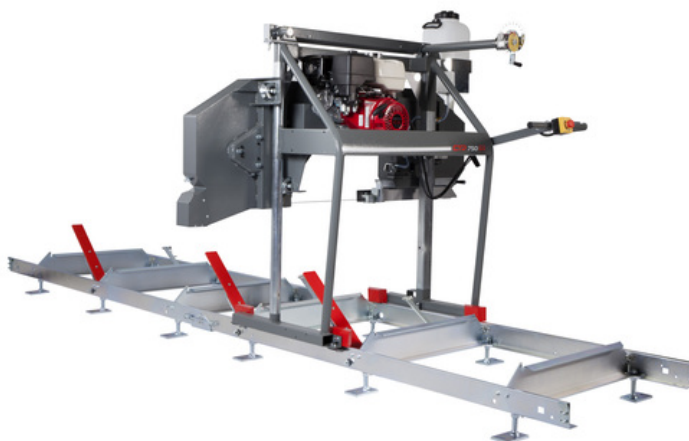
tallic wood-cutting band sized 35 x 0.9 mm which (same as the bimetallic metal-cutting band) does not require sharpening and setting of teeth. You can also fit your machine with standard saw-cutting bands (35 x 0.9 mm) identical to those used in higher professional models CTR 710, 800 and 950. Larger teeth in these saw bands allow for increase of productivity when cutting large diameter logs. However, in the above mentioned saw bands it is necessary to sharpen and set the teeth regularly.

The arm is fitted with large aluminium running wheels with accurate balancing against vibrations. The wheel has a groove along its circumference. The groove holds a replaceable rubber-textile belt which creates an optimum contact area between the wheel and the saw band.

The sturdily mounted running wheel is powered through a wedge belt by a professional electrical motor specially balanced against vibrations. The tensioning wheel system moves within a solid cast iron guiding, which ensures long-term service life and setting accuracy even in long-term machine operation.

CTR series present the latest trends in construction of log saw bands with a special emphasis on maximum accuracy and long-term service life of the machine while ensuring minimum costs. The machines are designed in an original modular execution which allows easy replacement or adjustment of all main technical sections and their individual parts. This in the long-term perspective reduces the maintenance costs and service times and therefore production stoppages as well.

PHOTOGALLERY





ACCESSORIES

ACCESSORIES – SPECIAL ACCESSORIES



2,25 m

Track section 2,25 m

Track section 2,25 m

Contain in basic: 3x cross beams, 1x angle arms, 1x material clamp
Variable points: 1x angle arm, 1x material clamp



Lever for log loading

Lever for log loading

Serves as help with manipulation with logs on machine frame.



Material clamp with variable square

Material clamp with variable square



Additional clamp arm

Additional clamp arm



Excentrický upínač

Eccentric clamp arm

For fast and easy log clamping.



Hand Operated Grease Gun

Hand operated grease gun

For regular maintenance of the machine according to the lubrication plan. Metal grease gun for 400g cartridges. Equipped with a flexible pressure tube.



Grease LV 2-3

Grease LV 2-3

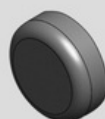
400g cartridge for the grease gun.

ACCESSORIES – CONSUMABLE PARTS



Hard-metal Plate 2 x 25 x 0,9 mm

Hard-metal plate 2 x 25 x 0,9 mm



Hard-metal Plate 12 x 4 mm

Hard-metal plate 12 x 4 mm

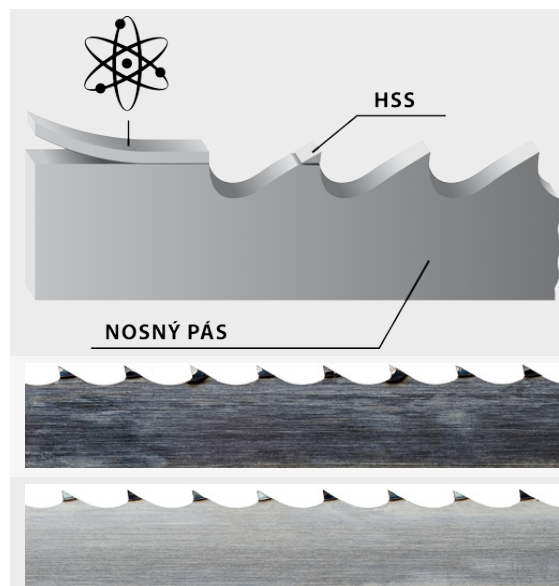


**Running wheel wedge belt SPB
1850
Wheel wedge belt B 17x1560 Lw**

**Running Wheel
Wedge Belt SPB
1850 Wheel Wedge
Belt 17x1560 Lw**



- The original saw blades PILOUS MAXwood are available in a variety of types which enables you to process any kind of wood.
- The wide product range not only offers more affordable saw blades for low-volume cutting, but includes also saw blades for fully professional cutting and utmost performance.
- The foundation of all saw blades are top-quality German materials and precise workmanship. The quality of the saw blades is carefully monitored. All saw blades correspond to the strict ISO 9001 norm.
- We have added to our portfolio also an original Munkfors saw blade made by the world's leading manufacturer Uddeholm from Sweden.
- Pilous saw blades are used in dozens of countries around the world. Any wood you cut, the company Pilous will recommend you a saw blade that will fit your needs.



BiMetal

Saw blade with tool steel teeth - completely eliminates the need to sharpen the saw blade as well as frequent blade replacement. Use: soft, hard to extremely hard wood.

HSS

Bearing blade

Stellite

Saw blade with teeth made of Stellite. Tooth setting is completely unnecessary. Use: soft, hard to extremely hard wood.

Carbon spring steel

The most common saw blade for optimum price/performance ratio. Use: soft and hard wood.



Be careful when unpacking welded saw blades. They are in a shipping container in tensioned condition. Remove the saw blade cover only after fitting it onto the machine.

